

Battered Cod Fillets 18 x 170-200g

Battered Cod Fillet 1x

PRODUCT DESCRIPTION

Skinless & Boneless Cod fillets coated in crispy Batter

Brand	Seafish UK
Manufacturer Product Code	K01C367
Product Type	Food
Product Category	Seafood - Fish
Storage Type	Frozen
Erudus ID	d56a911260384de781c0e3eca6d3312d
Specification Type	Legacy



INGREDIENTS

Ingredient Declaration

Cod (**FISH**) (50%), Batter Fortified Wheat flour (**WHEAT** Flour, Calcium carbonate, Iron, Thiamin, Niacin), Rapeseed Oil, Salt, **WHEAT** Starch, Raising agents: Sodium Phosphate, Sodium Carbonate, Skimmed **MILK** Powder, Yeast Extract.

ALLERGENS

Product Contains:

Celery/Celeriac	No	Mustard	No
Cereals Containing Gluten	Yes	Nuts (Tree)	No
Barley	No	Almond nuts	No
Oats	No	Brazil nuts	No
Rye	No	Cashew nuts	No
Wheat (including Spelt and Khorasan)	Yes	Hazelnuts	No
Gluten content <20ppm	No	Macadamia (Queensland) nuts	No
Crustacea	No	Pecan nuts	No
Eggs	No	Pistachio nuts	No
Fish	Yes	Walnuts	No
Lupin	No	Peanuts	No
Milk	Yes	Sesame Seeds	No
Molluscs	No	Soybeans	No
		Sulphur Dioxide and Sulphites	No

SUPPLEMENTARY INGREDIENT INFORMATION

Palm Oil	No
Hydrogenated Vegetable Oil/Fat	No
GM Protein/DNA	No

ADDITIVES

Product Contains:

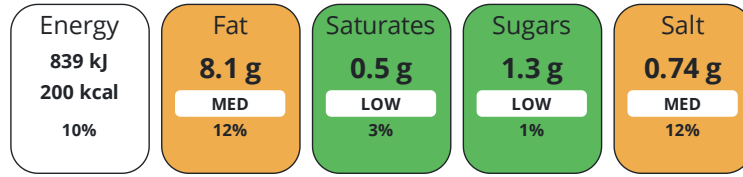
Artificial Antioxidants	No	Artificial Flavourings	No
Artificial Colours	No	Artificial Preservatives	No
Artificial Flavour Enhancers	No	Artificial Sweeteners	No

DIET SUITABILITY

Suitable for Coeliacs	No	Halal Diet	No
Kosher Diet	No	Vegetarian Diet	No
Vegan Diet	No		

NUTRITIONAL INFORMATION

Each 100g/ml portion contains:



of your reference intake.

Typical values per 100g/ml : Energy 200kcal / 839kj

Nutrient	per 100g/ml	RI per 100g/ml	per 100g/ml serving	RI per 100g/ml serving
Energy (kJ)	839 kJ	10%	839 kJ	10%
Energy (kcal)	200 kcal	10%	200 kcal	10%
Fat	8.1 g	12%	8.1 g	12%
of which Saturates	0.5 g	3%	0.5 g	3%
Carbohydrate	21 g	8%	21 g	8%
of which Sugars	1.3 g	1%	1.3 g	1%
Fibre	0.9 g		0.9 g	
Protein	10.3 g	21%	10.3 g	21%
Salt	0.74 g	12%	0.7 g	12%
Sodium	300 mg		300 mg	
Serving Size	100 g			

SUPPLEMENTARY NUTRITIONAL INFORMATION

HANDLING & STORAGE INFORMATION

Directions For Use

KEEP FROZEN Do not refreeze once thawed.

Storage Instructions

Store at -18 deg C or below.

Shelf Life from Time of Production

548 Days

ACCREDITATIONS/ CERTIFICATIONS/ ASSURANCE SCHEMES



Other Accreditation

ASC

ORIGIN

Product Country of Origin/Place of United Kingdom

Provenance

PRODUCT CHARACTERISTICS

Standards Testing

Do you undertake trend analysis of microbiological results? No

Is shelf life testing undertaken? No

Microbiological Standards

Organism	Description	Frequency	Target	Maximum	Sample (g or ml)
E. Coli (cfu/g or ml)		Every Batch	<20	1000	400

Organism	Description	Frequency	Target	Maximum	Sample (g or ml)
Staphylococcus Aureus (cfu/g or ml)		Every Batch	<20	1000	400
Aerobic Colony Count (ACC) (cfu/g or ml)		Every Batch	<100000	10000000	400
Enterobacter Sakazakii (cfu/g or ml)		Every Batch	<200	10000	400

CONFIGURATION

Case Configuration Inner Pack Configuration

Total Quantity of Inner Components in Outer Case 1 Units

Is the Outer Case Splittable? No

PRODUCT WEIGHTS

Inner Component

Variable Weight Consumer Item No

Weight/Volume

9.6g

Outer Case

Outer Case Gross Weight 3.21 kg

Outer Case Net Weight 3.06 kg

PRODUCT DIMENSIONS

Inner Component

Inner Component Depth 280 mm

Inner Component Width 150 mm

Inner Component Height 230 mm

Outer Case

Outer Case Depth 374 mm

Outer Case Width 235 mm

Outer Case Height 98 mm

PALLET INFORMATION

Quantity of Cases Per Pallet Layer 13 Cases

Pallet Height 1.6 MTR

Quantity of Layers Per Pallet 15 Layers

Pallet Gross Weight 646 kg

Quantity of Cases Per Pallet 195 Cases

PACKAGING

Inner Component Packaging

Type	Materials	Weight	Recycled Plastic %	Recyclable	Returnable	Composite
Bag	Plastic	9.6 g	- %			

Outer Case Packaging

Type	Materials	Weight	Recycled Plastic %	Recyclable	Returnable	Composite
Case	Paper/Cardboard	152 g	- %			

Transport Packaging

Type	Materials	Weight	Recycled Plastic %	Recyclable	Returnable	Composite
Other	Plastic	190 g	- %		Yes	
Other	Wood	20000 g	- %		Yes	

OTHER INFORMATION

Identification/Health Marks UK HU 035

CONTACT
INFORMATION

Address

Seafish UK
45 Wassand Street
Hull
HU3 4AN
United Kingdom

P: (Phone) 01482 223648

Complaints Contact

Katarzyna Czekalik
Technical Coordinator
kasia@sheltie.co.uk

P: (Phone) 01482223648

Technical Contact

Leigh McKenna
Technical Manager
leigh.mckenna@sheltie.co.uk

P: (Phone) 01482 223648

Commercial Contact

Emma Acklam
Sales and Marketing Director
ela@sheltie.co.uk

P: (Phone) 01482 223648

The information on the [Erudus System](#) has been supplied by the manufacturers of the products and, whilst the owners of the Erudus System take steps to ensure the information is regularly updated, they give no warranty and no guarantee that the information is accurate. Product information and ingredients may change, please always read product labels carefully in addition to using the information provided by Erudus.

We do not accept liability for any inaccuracies or incorrect information contained on this site.
Please visit <http://www.erudus.com/terms-and-conditions> for full terms and conditions.