

Onion Bhaji 1x

Onion Bhaji 35g (1 x 80)

PRODUCT DESCRIPTION

An Indian style snack made with strips of fresh onion, gram flour and flavoured with Indian style spices. (1 x 80)

Brand	Central Foods Group Ltd
Manufacturer Product Code	DF91010
Product Type	Food
Product Category	Vegetarian
Storage Type	Frozen
Erudus ID	fd98450816f4493c9afaa9375021f2a4
Specification Type	Legacy



Outer Case GTIN 05017713000284



INGREDIENTS

Ingredient Declaration

Onion (89%), Gram Flour (Maize Flour, Chana Dal, Yellow Split Peas), Rapeseed Oil, Fortified **WHEAT** Flour (**WHEAT** Flour, Calcium Carbonate, Iron, Niacin, Thiamin), Spices (Fenugreek, Cumin Powder, Cumin Seeds, Chilli Powder, Turmeric, Coriander, Black Pepper, Cloves, Cardamom, Nutmeg, Star Anise), Coriander Leaf, Salt, Ginger Puree, Raising Agent (Sodium Bicarbonate), Ginger Powder.

ALLERGENS

Product Contains:

Celery/Celeriac	No	Mustard	No
Cereals Containing Gluten	Yes	Nuts (Tree)	No
Barley	No	Almond nuts	No
Oats	No	Brazil nuts	No
Rye	No	Cashew nuts	No
Wheat (including Spelt and Khorasan)	Yes	Hazelnuts	No
Gluten content <20ppm	No	Macadamia (Queensland) nuts	No
Crustacea	No	Pecan nuts	No
Eggs	No	Pistachio nuts	No
Fish	No	Walnuts	No
Lupin	No	Peanuts	No
Milk	No	Sesame Seeds	May Contain
Molluscs	No	Soybeans	No
		Sulphur Dioxide and Sulphites	No

Risk Source:

SUPPLEMENTARY
INGREDIENT
INFORMATION

Palm Oil	No
Hydrogenated Vegetable Oil/Fat	No
GM Protein/DNA	No

ADDITIVES

Product Contains:

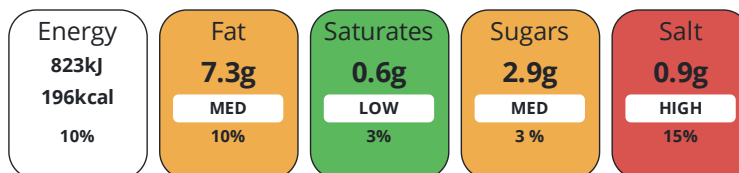
Artificial Antioxidants	No	Artificial Flavourings	No
Artificial Colours	No	Artificial Preservatives	No
Artificial Flavour Enhancers	No	Artificial Sweeteners	No

DIET
SUITABILITY

Suitable for Coeliacs	No	Halal Diet	No
Kosher Diet	No	Vegetarian Diet	Suitable for
Vegan Diet	Suitable for		

NUTRITIONAL
INFORMATION

Each 100g/ml portion contains:



of your reference intake.

Typical values per 100g/ml : Energy 196kcal / 823kj

Nutrient	per 100g/ml	RI per 100g/ml	per 35g/ml serving	RI per 35g/ml serving
Energy (kj)	823 kj	10%	288.1 kj	3%
Energy (kcal)	196 kcal	10%	68.6 kcal	3%
Fat	7.3 g	10%	2.6 g	4%
of which Saturates	0.6 g	3%	0.2 g	1%
Carbohydrate	24.1 g	9%	8.4 g	3%
of which Sugars	2.9 g	3%	1 g	1%
Fibre	5.5 g		1.9 g	
Protein	5.8 g	12%	2 g	4%
Salt	0.9 g	15%	0.3 g	5%
Sodium	360 mg		126 mg	

Serving Size 35 g

SUPPLEMENTARY
NUTRITIONAL
INFORMATION

HANDLING &
STORAGE
INFORMATION

Directions For Use

From Frozen unless otherwise stated Oven: Remove all packaging. Preheat oven to 200°C/Gas Mark 6. Place onion bhajis on a wire rack over a baking tray and heat for 10-12 mins (from chilled), 14-16mins (from frozen). Ensure onion bhajis are piping hot throughout before serving. Do not reheat. Once defrosted do not re-freeze.

Storage Instructions

Keep Frozen. Store at -18°C or below

Shelf Life from Time of Production 411 Days

Other Accreditation

N/A

ORIGIN

Product Country of Origin/Place of United Kingdom

Provenance

Additional Origin Details

United Kingdom

PRODUCT
CHARACTERISTICS

Standards Testing

Do you undertake trend analysis of microbiological results? No

Is shelf life testing undertaken? No

Microbiological Standards

Organism	Description	Frequency	Target	Maximum	Sample (g or ml)
E. Coli (cfu/g or ml)		Quarterly	<10	10	-
Enterobacteriaceae (cfu/g or ml)		Monthly	<100	1000	-
Listeria Monocytogenes (cfu/g or ml)		Quarterly	=0	0	25
Staphylococcus Aureus (cfu/g or ml)		Quarterly	<20	100	-
Total Viable Count (TVC) (cfu/g or ml)		Monthly	<1000	10000	-
Salmonella (cfu/g or ml)		Quarterly	=0	0	25
Yeast (cfu/g or ml)		Quarterly	<100	1000	-
Moulds (cfu/g or ml)		Quarterly	<100	1000	-

CONFIGURATION

Case Configuration

Inner Pack Configuration

Total Quantity of Inner Components in 1 Units

Outer Case

Is the Outer Case Splittable? No

PRODUCT
WEIGHTS

Inner Component

Variable Weight Consumer Item No

Weight/Volume

40/1.4kg

Outer Case

Outer Case Gross Weight 3.01 kg

Outer Case Net Weight 2.8 kg

PRODUCT
DIMENSIONS

Inner Component

Inner Component Depth 0 mm

Inner Component Width 0 mm

Inner Component Height 0 mm

Outer Case

Outer Case Depth 390 mm

Outer Case Width 190 mm

Outer Case Height 172 mm

PALLET INFORMATION

Quantity of Cases Per Pallet Layer	15 Cases	Pallet Height	1.7 MTR
Quantity of Layers Per Pallet	9 Layers	Pallet Gross Weight	421.35 kg
Quantity of Cases Per Pallet	135 Cases		

PACKAGING

Inner Component Packaging

Type	Materials	Weight	Recycled Plastic %	Recyclable	Returnable	Composite
Bag	Plastic	24 g	- %			
Bag	Paper/Cardboard	188 g	- %			

Transport Packaging

Type	Materials	Weight	Recycled Plastic %	Recyclable	Returnable	Composite
Other	Plastic	280 g	- %		Yes	

OTHER INFORMATION CONTACT INFORMATION

Address

Central Foods Group Ltd
 Maple Court
 Ash Lane, Collingtree
 Northampton
 Northants
 NN4 0NB
 England

P: (Phone) 01604 858 522

The information on the [Erudus System](#) has been supplied by the manufacturers of the products and, whilst the owners of the Erudus System take steps to ensure the information is regularly updated, they give no warranty and no guarantee that the information is accurate. Product information and ingredients may change, please always read product labels carefully in addition to using the information provided by Erudus.

We do not accept liability for any inaccuracies or incorrect information contained on this site.
 Please visit <http://www.erudus.com/terms-and-conditions> for full terms and conditions.