

976865

Gluten Free Vegan Super Flapjack 1x1.2kg

GLUTEN FREE VEGAN SUPER FLAPJACK 1x12pp

PRODUCT DESCRIPTION

An oatly vegan flapjack full of fruity pieces and finished with sweet chocolate pieces and floral cornflower petals in varying proportions. Pre-portioned into 12 bars in a multi-portion tray, packed 1 tray per outer.

Brand	CDT Sidoli (Welshpool) Ltd
Manufacturer Product Code	53652
Product Type	Food
Product Category	Desserts
Storage Type	Frozen
Erudus ID	73c61c28ff53417cbd211db0ea99b83e
Specification Type	Legacy
Outer Case GTIN	5015091536524



INGREDIENTS

Ingredient Declaration

Gluten free **OATS**, golden syrup, dates, dried apricots (apricot, rice flour, preservative (SULPHUR dioxide)), margarine (palm oil, rapeseed oil, water, emulsifier (mono- and diglycerides of fatty acids), natural flavouring), coconut oil, brown sugar, sultanas, desiccated coconut, chocolate chips (sugar, cocoa mass, cocoa butter, emulsifier (**SOYA** lecithin), natural vanilla flavouring), **PECAN NUTS**, goji berries, pumpkin seeds, natural flavouring, cornflower petals.

ALLERGENS

Product Contains:

Celery/Celeriac	No	Mustard	No
Cereals Containing Gluten	Yes	Nuts (Tree)	Yes
Barley	No	Almond nuts	May Contain
Oats	Yes	Brazil nuts	No
Rye	No	Cashew nuts	No
Wheat (including Spelt and Khorasan)	No	Hazelnuts	May Contain
Gluten content <20ppm	Yes	Macadamia (Queensland) nuts	No
Crustacea	No	Pecan nuts	Yes
Eggs	May Contain	Pistachio nuts	May Contain
Fish	No	Walnuts	May Contain
Lupin	No	Peanuts	No
Milk	May Contain	Sesame Seeds	No
Molluscs	No	Soybeans	Yes
		Sulphur Dioxide and Sulphites	Yes

Risk Source:

SUPPLEMENTARY INGREDIENT INFORMATION

Palm Oil	Yes
Hydrogenated Vegetable Oil/Fat	No
GM Protein/DNA	No

ADDITIVES

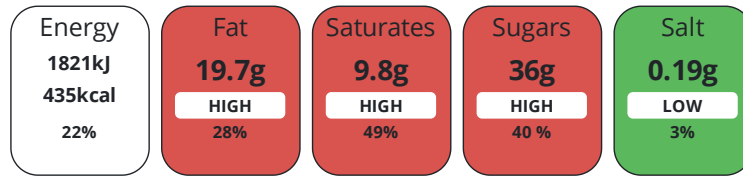
Product Contains:

Artificial Antioxidants	No	Artificial Flavourings	No
Artificial Colours	No	Artificial Preservatives	Yes
Artificial Flavour Enhancers	No	Artificial Sweeteners	No
Suitable for Coeliacs	Yes	Halal Diet	No
Kosher Diet	No	Vegetarian Diet	Suitable for
Vegan Diet	Suitable for		

DIET SUITABILITY

NUTRITIONAL INFORMATION

Each 100g/ml portion contains:



of your reference intake.

Typical values per 100g/ml : Energy 435kcal / 1821kj

Nutrient	per 100g/ml	RI per 100g/ml	per 100g/ml serving	RI per 100g/ml serving
Energy (kJ)	1821 kJ	22%	1821 kJ	22%
Energy (kcal)	435 kcal	22%	435 kcal	22%
Fat	19.7 g	28%	19.7 g	28%
of which Saturates	9.8 g	49%	9.8 g	49%
Carbohydrate	57 g	22%	57 g	22%
of which Sugars	36 g	40%	36 g	40%
Fibre	6.4 g		6.4 g	
Protein	4.2 g	8%	4.2 g	8%
Salt	0.19 g	3%	0.2 g	3%
Serving Size	100 g			

SUPPLEMENTARY NUTRITIONAL INFORMATION

HANDLING & STORAGE INFORMATION

Directions For Use

Handling Instructions: Defrost prior to serving. Store in a gluten free environment. Keep refrigerated once defrosted. Use within 72 hours of defrost. Do not re-freeze once defrosted. Defrosting Instruction: Per Tray: Defrost under refrigeration (8C or below) for approximately 3-4 hours. Per Portion: Defrost a portion under refrigeration (8C or below) for approximately 30 minutes.

Storage Instructions

At or below minus 18°C (0°F).

Shelf Life from Time of Production 730 Days

ACCREDITATIONS/ CERTIFICATIONS/ ASSURANCE SCHEMES



ORIGIN

Product Country of Origin/Place of United Kingdom

Provenance

PRODUCT CHARACTERISTICS

Standards Testing

	Do you undertake trend analysis of microbiological results?	Yes	Is shelf life testing undertaken?				No
	Microbiological Standards						
	Organism	Description	Frequency	Target	Maximum	Sample (g or ml)	
	E. Coli (cfu/g or ml)		Occasionally	<10	10	-	
	Enterobacteriaceae (cfu/g or ml)		Occasionally	<10	10	-	
	Staphylococcus Aureus (cfu/g or ml)		Occasionally	<20	20	-	
	Total Viable Count (TVC) (cfu/g or ml)		Occasionally	<100000	100000	-	
CONFIGURATION	Case Configuration			Inner Pack Configuration			
	Total Quantity of Inner Components in Outer Case	1 Units					
	Is the Outer Case Splittable?	No					
PRODUCT WEIGHTS	Inner Component						
	Variable Weight Consumer Item	No					
	Inner Component Weight	1.2 kg					
	Outer Case						
	Outer Case Gross Weight	1.55 kg					
	Outer Case Net Weight	1.2 kg					
PRODUCT DIMENSIONS	Inner Component						
	Inner Component Depth	323 mm					
	Inner Component Width	201 mm					
	Inner Component Height	31 mm					
	Outer Case						
	Outer Case Depth	331 mm					
	Outer Case Width	210 mm					
	Outer Case Height	40 mm					
PALLET INFORMATION	Quantity of Cases Per Pallet Layer	12 Cases		Pallet Height	1.72 MTR		
	Quantity of Layers Per Pallet	39 Layers		Pallet Gross Weight	753.4 kg		
	Quantity of Cases Per Pallet	468 Cases					
PACKAGING	Inner Component Packaging						
	Type	Materials	Weight	Recycled Plastic %	Recyclable	Returnable	Composite
	Foil	Plastic	6 g	- %			
	Foil	Aluminium	23.34 g	- %			
	Outer Case Packaging						
	Type	Materials	Weight	Recycled Plastic %	Recyclable	Returnable	Composite
	Case	Paper/Cardboard	73.8 g	- %			
OTHER INFORMATION	Intrastat/Taric Code	19059070					
	Manufacturer Comments						
	This Product contains Oats but these are gluten free						

CONTACT
INFORMATION

Address

CDT Sidoli (Welshpool) Ltd
Henfaes Lane
Welshpool
Powys
SY21 7BE
Wales

P: (Phone) 01938 555234

Technical Contact

Michele Fischetti
Technical Manager
mfischetti@sidoli.co.uk

P: (Phone) 01938 555234

The information on the [Erudus System](#) has been supplied by the manufacturers of the products and, whilst the owners of the Erudus System take steps to ensure the information is regularly updated, they give no warranty and no guarantee that the information is accurate. Product information and ingredients may change, please always read product labels carefully in addition to using the information provided by Erudus.

We do not accept liability for any inaccuracies or incorrect information contained on this site.

Please visit <http://www.erudus.com/terms-and-conditions> for full terms and conditions.