

Changed May 03, 2024 06:10

Erudus ID 17f741fee40f470d8d8f90320762ba17

Version 2.1



This specification is published by [Erudus](#) for Country Range Group

Country Range Garlic & Parsley Slices

Country Range Garlic & Parsley Slices 150x150

PRODUCT DESCRIPTION

part baked French style white bread slices topped with garlic & parsley topping

Brand	Country Range Group
Label Own Label Code	SC005
Product Type	Food
Product Category	Bakery - General
Storage Type	Frozen
Erudus ID	17f741fee40f470d8d8f90320762ba17
Specification Type	Legacy
Outer Case GTIN	05023616505207



INGREDIENTS

Ingredient Declaration

WHEAT Flour (**WHEAT** Flour, Calcium Carbonate, Iron, Niacin, Thiamin), Water, Vegetable Oils (Palm Fat, Rapeseed Oil), Garlic Puree (4%), Yeast, Parsley, Salt, Dextrose, Emulsifiers (Mono- and diglycerides of fatty acids), Flour Treatment Agent (Ascorbic acid), Natural Flavouring, Natural Colour (Beta Carotene).

ALLERGENS

Product Contains:

Celery/Celeriac	No
Cereals Containing Gluten	Yes
Barley	No
Oats	No
Rye	No
Wheat (including Spelt and Khorasan)	Yes
Gluten content <20ppm	No
Crustacea	No
Eggs	No
Fish	No
Lupin	No
Milk	May Contain
Molluscs	No
Mustard	No
Nuts (Tree)	No
Almond nuts	No
Brazil nuts	No
Cashew nuts	No
Hazelnuts	No
Macadamia (Queensland) nuts	No
Pecan nuts	No
Pistachio nuts	No
Walnuts	No
Peanuts	No
Sesame Seeds	No
Soybeans	No
Sulphur Dioxide and Sulphites	No

Risk Source:

SUPPLEMENTARY INGREDIENT INFORMATION

Palm Oil	Yes
Hydrogenated Vegetable Oil/Fat	No
GM Protein/DNA	No
Alcoholic Strength %Vol (ABV)	0 % Vol

ADDITIVES

Product Contains:

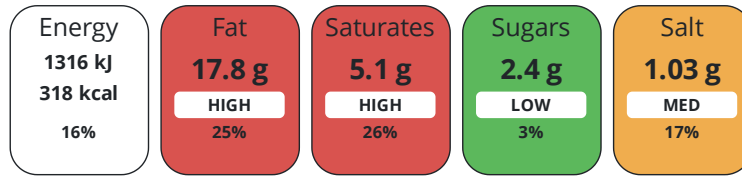
Artificial Antioxidants	No
Artificial Colours	No
Artificial Flavour Enhancers	No
Artificial Flavourings	No
Artificial Preservatives	No
Artificial Sweeteners	No

DIET SUITABILITY

Suitable for Coeliacs	No	Halal Diet	No
Kosher Diet	No	Vegetarian Diet	Suitable for
Vegan Diet	No		

NUTRITIONAL INFORMATION

Each 100g/ml portion contains:



of your reference intake.

Typical values per 100g/ml : Energy 318kcal / 1316kJ

Nutrient	per 100g/ml	RI per 100g/ml	per 28g/ml serving	RI per 28g/ml serving
Energy (kJ)	1316 kJ	16%	368.5 kJ	4%
Energy (kcal)	318 kcal	16%	89 kcal	4%
Fat	17.8 g	25%	5 g	7%
of which Saturates	5.1 g	26%	1.4 g	7%
of which Mono-unsaturates	10.3 g		2.9 g	
of which Polyunsaturates	2.2 g		0.6 g	
Carbohydrate	41.7 g	16%	11.7 g	5%
of which Sugars	2.4 g	3%	0.7 g	1%
of which Polyols	0 g		-	
of which Starch	0 g		-	
Fibre	0.04 g		-	
Protein	6.42 g	13%	1.8 g	4%
Salt	1.03 g	17%	0.3 g	5%
Sodium	411 mg		115.1 mg	
Serving Size			28 g	

VITAMINS AND MINERALS

Nutrient	per 100g/ml	RI per 100g/ml	per 28g/ml serving	RI per 28g/ml serving
Vitamin A	0 µg	0%	-	
Vitamin C	0 mg	0%	-	
Folate/Folic Acid	0 µg	0%	-	
Calcium	0 mg	0%	-	
Iron	0 mg	0%	-	
Zinc	0 mg	0%	-	

SUPPLEMENTARY NUTRITIONAL INFORMATION

Cholesterol per 100 g/ml (UK/FR)	0 g
Trans Fats per 100 g/ml	0.16 g
Fat Percentage in Dry Matter per 100 g/ml	0 %
Non Milk Extrinsic Sugars per 100 g/ml	0 g

HFSS (HIGH IN FAT, SALT AND SUGAR)

HFSS Status No

HANDLING & STORAGE INFORMATION

Directions For Use

Cook as instructed

Storage Instructions

Keep frozen at -18°C or below

Shelf Life from Time of Production

365 Days

ACCREDITATIONS/ CERTIFICATIONS/ ASSURANCE SCHEMES

BRCGS Certified

Roundtable of Sustainable Palm Oil (RSPO)

ORIGIN

Product Country of Origin/Place of

United Kingdom

Provenance

PRODUCT CHARACTERISTICS

Standards Testing

Do you undertake trend analysis of microbiological results?

Yes

Is shelf life testing undertaken?

Yes

CONFIGURATION

Case Configuration

Total Quantity of Inner Components in Outer Case

150 Units

Is the Outer Case Splittable?

No

Inner Pack Configuration

Count per Inner Component

150

PRODUCT WEIGHTS

Inner Component

Variable Weight Consumer Item

No

Net Drained Weight

4.2 kg

Weight/Volume

150 x 28g

Outer Case

Outer Case Gross Weight

4.5 kg

Outer Case Net Weight

0.29 kg

PRODUCT DIMENSIONS

Inner Component

Inner Component Depth

435 mm

Inner Component Width

282 mm

Inner Component Height

182 mm

Outer Case

Outer Case Depth

435 mm

Outer Case Width

282 mm

Outer Case Height

182 mm

PALLET INFORMATION

Quantity of Cases Per Pallet Layer

8 Cases

Quantity of Layers Per Pallet

8 Layers

Quantity of Cases Per Pallet

64 Cases

Pallet Height

1.46 MTR

Pallet Gross Weight

287.8 kg

PACKAGING

Inner Component Packaging

Type	Materials	Weight	Recycled Plastic %	Recyclable	Returnable	Composite
Film	Plastic	12 g	0.00 %			

Transport Packaging

Type	Materials	Weight	Recycled Plastic %	Recyclable	Returnable	Composite
Other	Plastic	12 g	0.00 %			
Other	Paper/Cardboard	285 g	- %			

OTHER INFORMATION

Intrastat/Taric Code	1905903000
Identification/Health Marks	n/a

Manufacturer Comments

no

CONTACT INFORMATION

ADDRESS

Country Range Group
 Accrington
 Lancs
 United Kingdom

P. (Phone) 0845 209 3777

The information on the [Erudus System](#) has been supplied by the manufacturers of the products and, whilst the owners of the Erudus System take steps to ensure the information is regularly updated, they give no warranty and no guarantee that the information is accurate. Product information and ingredients may change, please always read product labels carefully in addition to using the information provided by Erudus.

We do not accept liability for any inaccuracies or incorrect information contained on this site.
 Please visit <http://www.erudus.com/terms-and-conditions> for full terms and conditions.