

# Tom & Bas Quiche P/cut 12ptn (1 X 1)

Tom & Bas Quiche p/cut 12ptn (1 x 1)

## PRODUCT DESCRIPTION

Pre-sliced quiche made with egg, diced tomato and basil encased in golden shortcrust pastry (12 portions). Palm from a sustainable source, RSPO certificate number BMT-RSPO-000578 (1 x 1)

<b>Brand</b>	Central Foods Group Ltd
<b>Manufacturer Product Code</b>	MSQS022
<b>Product Type</b>	Food
<b>Product Category</b>	Vegetarian
<b>Storage Type</b>	Frozen
<b>Erudus ID</b>	8cc5b4ae4c8648658228dac56f4de929
<b>Specification Type</b>	Legacy



**Outer Case GTIN** 05060062473728



## INGREDIENTS

### Ingredient Declaration

Pastry Case: Fortified **WHEAT** Flour (with Calcium, Iron, Niacin, Thiamine), Margarine (Palm Oil, Coconut Oil, Rapeseed Oil, Water, Salt, Emulsifier (Mono- and Diglycerides of Fatty Acids), Acidity Regulator (Citric Acid, Disodium Citrate), Natural Flavouring, Colour (Natural Carotenes)), Shortening (Palm Oil, Rapeseed Oil), Maize Flour, Water, Tomato Puree, Sea Salt. Filling: Water, Whole Liquid **EGG** (12%), Tomato (9%), Mature White **Cheddar Cheese** (5%) (**MILK**, Salt, Starter, Rennet, Potato Starch), Whole **MILK** Powder, Tomato Paste, Cornflour, Modified Maize Starch, Basil (0.1%), Salt, **MUSTARD** Powder, Ground White Pepper.

## ALLERGENS

Product Contains:

<b>Celery/Celериac</b>	No	<b>Mustard</b>	Yes
<b>Cereals Containing Gluten</b>	Yes	<b>Nuts (Tree)</b>	No
<b>Barley</b>	No	<b>Almond nuts</b>	No
<b>Oats</b>	No	<b>Brazil nuts</b>	No
<b>Rye</b>	No	<b>Cashew nuts</b>	No
<b>Wheat (including Spelt and Khorasan)</b>	Yes	<b>Hazelnuts</b>	No
<b>Gluten content &lt;20ppm</b>	No	<b>Macadamia (Queensland) nuts</b>	No
<b>Crustacea</b>	No	<b>Pecan nuts</b>	No
<b>Eggs</b>	Yes	<b>Pistachio nuts</b>	No
<b>Fish</b>	No	<b>Walnuts</b>	No
<b>Lupin</b>	No	<b>Peanuts</b>	No
<b>Milk</b>	Yes	<b>Sesame Seeds</b>	No
<b>Molluscs</b>	No	<b>Soybeans</b>	No
		<b>Sulphur Dioxide and Sulphites</b>	No

## SUPPLEMENTARY INGREDIENT INFORMATION

<b>Palm Oil</b>	Yes
<b>Hydrogenated Vegetable Oil/Fat</b>	No
<b>GM Protein/DNA</b>	No

ADDITIVES

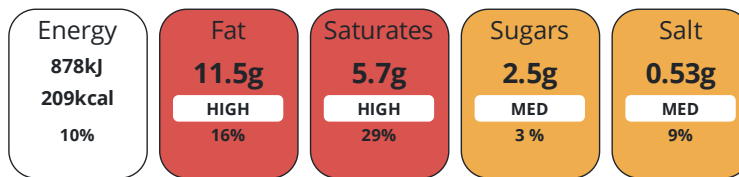
Product Contains:

<b>Artificial Antioxidants</b>	No	<b>Artificial Flavourings</b>	No
<b>Artificial Colours</b>	No	<b>Artificial Preservatives</b>	No
<b>Artificial Flavour Enhancers</b>	No	<b>Artificial Sweeteners</b>	No
<b>Suitable for Coeliacs</b>	No	<b>Halal Diet</b>	No
<b>Kosher Diet</b>	No	<b>Vegetarian Diet</b>	Suitable for
<b>Vegan Diet</b>	No		

DIET SUITABILITY

NUTRITIONAL INFORMATION

Each 100g/ml portion contains:



of your reference intake.

Typical values per 100g/ml : Energy 209kcal / 878kj

Nutrient	per 100g/ml	RI per 100g/ml	per 100g/ml serving	RI per 100g/ml serving
<b>Energy (kj)</b>	878 kj	10%	878 kj	10%
<b>Energy (kcal)</b>	209 kcal	10%	209 kcal	10%
<b>Fat</b>	11.5 g	16%	11.5 g	16%
<b>of which Saturates</b>	5.7 g	29%	5.7 g	29%
<b>Carbohydrate</b>	21.7 g	8%	21.7 g	8%
<b>of which Sugars</b>	2.5 g	3%	2.5 g	3%
<b>Fibre</b>	0.9 g		0.9 g	
<b>Protein</b>	5.4 g	11%	5.4 g	11%
<b>Salt</b>	0.53 g	9%	0.5 g	8%
<b>Sodium</b>	210 mg		210 mg	

**Serving Size** 100 g

SUPPLEMENTARY NUTRITIONAL INFORMATION

HFSS (HIGH IN FAT, SALT AND SUGAR) HANDLING & STORAGE INFORMATION

**HFSS Status** 1

**Directions For Use**

From Frozen unless otherwise stated Oven: Remove outer packaging, leave in foil tray. Pre heat oven 190°C / Gas Mark 5. Place quiche on a baking tray and reheat for 30 minutes until a core temperature of >75°C (or relevant national requirements) for 30 seconds is achieved before serving. To serve chilled leave in a refrigerator overnight to defrost. Once defrosted consume within 24 hours. Do not refreeze once defrosted. Air Fryer: Pre-heat air fryer to 160°C. Whilst still frozen, remove quiche from packaging and carefully separate the slices. Arrange slices approx. 3cm apart on top of greaseproof paper and place inside the air fryer compartment. Bake for approx. 18 mins (4 slices), until golden brown and heated through. To serve warm: these are guidelines only. Appliances may vary. Ensure a core temperature of > 75°C is achieved (or relevant national requirements) for at least 30 secs before serving. Do not reheat once cooled.

**Storage Instructions**

Keep Frozen. Store at -18°C or below

**Shelf Life from Time of Production** 405 Days

ORIGIN **Product Country of Origin/Place of** United Kingdom

**Provenance**

**Additional Origin Details**

United Kingdom

PRODUCT  
CHARACTERISTICS

Standards Testing

**Do you undertake trend analysis of microbiological results?** No **Is shelf life testing undertaken?** No

Microbiological Standards

Organism	Description	Frequency	Target	Maximum	Sample (g or ml)
Coliforms (cfu/g or ml)		Annually	<10	100	-
Listeria Monocytogenes (cfu/g or ml)	Not detected in 25g	Annually	=0	0	25
Staphylococcus Aureus (cfu/g or ml)		Annually	<50	100	-
Total Viable Count (TVC) (cfu/g or ml)		Annually	<500000	5000000	-
Salmonella (cfu/g or ml)	Not detected in 25g	Annually	=0	0	25

CONFIGURATION

Case Configuration

Inner Pack Configuration

**Total Quantity of Inner Components in Outer Case** 1 Units

**Is the Outer Case Splittable?**

No

PRODUCT  
WEIGHTS

Inner Component

**Variable Weight Consumer Item Weight/Volume** No

**Weight/Volume**

N/A

Outer Case

**Outer Case Gross Weight** 1.38 kg

**Outer Case Net Weight** 1.25 kg

PRODUCT  
DIMENSIONS

Inner Component

**Inner Component Depth** 0 mm

**Inner Component Width** 0 mm

**Inner Component Height** 0 mm

Outer Case

**Outer Case Depth** 280 mm

**Outer Case Width** 277 mm

**Outer Case Height** 46 mm

PALLET  
INFORMATION

**Quantity of Cases Per Pallet Layer** 12 Cases

**Quantity of Layers Per Pallet** 30 Layers

**Quantity of Cases Per Pallet** 360 Cases

**Pallet Height** 1.53 MTR

**Pallet Gross Weight** 511.8 kg

PACKAGING

Inner Component Packaging

Type	Materials	Weight	Recycled Plastic %	Recyclable	Returnable	Composite
Bag	Plastic	15 g	- %			
Bag	Paper/Cardboard	100 g	- %			
Bag	Aluminium	14 g	- %			

Transport Packaging

Type	Materials	Weight	Recycled Plastic %	Recyclable	Returnable	Composite
Other	Plastic	280 g	- %		Yes	

OTHER INFORMATION CONTACT INFORMATION

Address

Central Foods Group Ltd  
 Maple Court  
 Ash Lane, Collingtree  
 Northampton  
 Northants  
 NN4 0NB  
 England

P: (Phone) 01604 858 522

The information on the [Erudus System](#) has been supplied by the manufacturers of the products and, whilst the owners of the Erudus System take steps to ensure the information is regularly updated, they give no warranty and no guarantee that the information is accurate. Product information and ingredients may change, please always read product labels carefully in addition to using the information provided by Erudus.

We do not accept liability for any inaccuracies or incorrect information contained on this site. Please visit <http://www.erudus.com/terms-and-conditions> for full terms and conditions.