

GF Caramel Shortbread (1 x 18)

Gf Caramel Shortbread (1 X 18)

PRODUCT DESCRIPTION

Gluten, wheat and milk free shortbread base topped with a layer of caramel filling finished with dark chocolate. Palm from a sustainable source, RSPO certificate number BMT-RSPO-000226 (1 x 18)

Brand	Central Foods Group Ltd
Manufacturer Product Code	WLC0656
Product Type	Food
Product Category	Bakery - General
Storage Type	Frozen
Erudus ID	e18b975287804ffbad63c49c93e4b549
Specification Type	Legacy
Inner Component GTIN	5028931006569
Outer Case GTIN	05028931106566



INGREDIENTS

Ingredient Declaration

Shortbread (Rice Flour, Brown Rice Flour, Palm Oil, Sugar, Brown Sugar, Rapeseed Oil, Tapioca Starch, Water, Flavouring, Thickener (Xanthan Gum), Raising Agents (Calcium Phosphate, Sodium Bicarbonate), Salt, Emulsifier (Mono- and Diglycerides of Fatty Acids), Colour (Plain Caramel)), Caramel (37%) (Golden Syrup, Cocoa Butter, Sugar, Rice Syrup, Rice Starch, Rice Flour, Flavouring, Colour (Plain Caramel), Salt), Dark Chocolate (17%) (Cocoa Mass, Cocoa Butter, Sugar, Emulsifier (Sunflower Lecithin)), Glucose Syrup.

ALLERGENS

Product Contains:

Celery/Celeriac	No	Mustard	No
Cereals Containing Gluten	No	Nuts (Tree)	May Contain
Barley	No	Almond nuts	May Contain
Oats	No	Brazil nuts	May Contain
Rye	No	Cashew nuts	May Contain
Wheat (including Spelt and Khorasan)	No	Hazelnuts	May Contain
Gluten content <20ppm	Yes	Macadamia (Queensland) nuts	No
Crustacea	No	Pecan nuts	May Contain
Eggs	May Contain	Pistachio nuts	May Contain
Fish	No	Walnuts	May Contain
Lupin	No	Peanuts	No
Milk	No	Sesame Seeds	No
Molluscs	No	Soybeans	No
		Sulphur Dioxide and Sulphites	No

Risk Source:

SUPPLEMENTARY INGREDIENT INFORMATION

Palm Oil	Yes
Hydrogenated Vegetable Oil/Fat	No
GM Protein/DNA	No

ADDITIVES

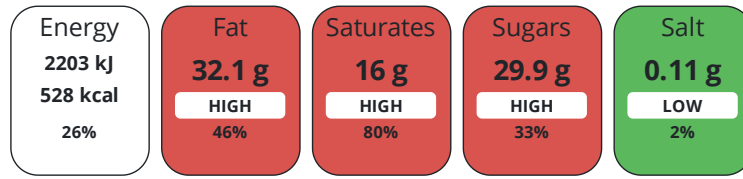
Product Contains:

Artificial Antioxidants	No	Artificial Flavourings	No
Artificial Colours	No	Artificial Preservatives	No
Artificial Flavour Enhancers	No	Artificial Sweeteners	No
Suitable for Coeliacs	Yes	Halal Diet	No
Kosher Diet	No	Vegetarian Diet	Suitable for
Vegan Diet	Suitable for		

DIET SUITABILITY

NUTRITIONAL INFORMATION

Each 100g/ml portion contains:



of your reference intake.

Typical values per 100g/ml : Energy 528kcal / 2203kj

Nutrient	per 100g/ml	RI per 100g/ml	per 50g/ml serving	RI per 50g/ml serving
Energy (kJ)	2203 kJ	26%	1101.5 kJ	13%
Energy (kcal)	528 kcal	26%	264 kcal	13%
Fat	32.1 g	46%	16.1 g	23%
of which Saturates	16 g	80%	8 g	40%
Carbohydrate	56.6 g	22%	28.3 g	11%
of which Sugars	29.9 g	33%	15 g	17%
Fibre	1.4 g		0.7 g	
Protein	2.3 g	5%	1.2 g	2%
Salt	0.11 g	2%	0.1 g	2%
Sodium	44 mg		22 mg	
Serving Size	50 g			

SUPPLEMENTARY NUTRITIONAL INFORMATION

HFSS (HIGH IN FAT, SALT AND SUGAR) HANDLING & STORAGE INFORMATION

HFSS Status	Yes
Directions For Use	From Frozen unless otherwise stated Defrost at room temperature for 6 hours. Once defrosted do not refreeze. Once defrosted, label each individual product with Best Before Date: Day of defrost + 28 days. To maintain gluten-free and vegan integrity, please ensure all equipment used for gluten-free and vegan preparation/cooking/serving is clean or dedicated for gluten-free and vegan use only.
Storage Instructions	Keep Frozen. Store at -18°C or below
Shelf Life from Time of Production	274 Days

ORIGIN **Product Country of Origin/Place of** United Kingdom

Provenance

Additional Origin Details

United Kingdom

PRODUCT
CHARACTERISTICS

Standards Testing

Do you undertake trend analysis of microbiological results?

No

Is shelf life testing undertaken?

No

Microbiological Standards

Organism	Description	Frequency	Target	Maximum	Sample (g or ml)
Bacillus Cereus (cfu/g or ml)		Quarterly	<1000	1000	-
E. Coli (cfu/g or ml)		Quarterly	<100	100	-
Enterobacteriaceae (cfu/g or ml)		Quarterly	<1000	1000	-
Listeria Monocytogenes (cfu/g or ml)	Not detected in 25g	Quarterly	=0	0	25
Staphylococcus Aureus (cfu/g or ml)		Quarterly	<100	100	-
Total Viable Count (TVC) (cfu/g or ml)		Quarterly	<5000	5000	-
Salmonella (cfu/g or ml)	Not detected in 25g	Quarterly	=0	0	25
Yeast (cfu/g or ml)		Quarterly	<1000	1000	-
Moulds (cfu/g or ml)		Quarterly	<1000	1000	-

CONFIGURATION

Case Configuration

Inner Pack Configuration

Total Quantity of Inner Components in 18 Units

Outer Case

Is the Outer Case Splittable?

No

PRODUCT
WEIGHTS

Inner Component

Variable Weight Consumer Item

No

Weight/Volume

N/A

Outer Case

Outer Case Gross Weight

1.02 kg

Outer Case Net Weight

0.9 kg

PRODUCT
DIMENSIONS

Inner Component

Inner Component Depth

0 mm

Inner Component Width

0 mm

Inner Component Height

0 mm

Outer Case

Outer Case Depth

277 mm

Outer Case Width

115 mm

Outer Case Height

96 mm

PALLET INFORMATION

Quantity of Cases Per Pallet Layer	30 Cases	Pallet Height	1.11 MTR
Quantity of Layers Per Pallet	10 Layers	Pallet Gross Weight	321 kg
Quantity of Cases Per Pallet	300 Cases		

PACKAGING

Inner Component Packaging

Type	Materials	Weight	Recycled Plastic %	Recyclable	Returnable	Composite
Bag	Plastic	9 g	- %			
Bag	Paper/Cardboard	121 g	- %			

Transport Packaging

Type	Materials	Weight	Recycled Plastic %	Recyclable	Returnable	Composite
Other	Plastic	280 g	- %		Yes	

OTHER INFORMATION CONTACT INFORMATION

Address

Central Foods Group Ltd
 Maple Court
 Ash Lane, Collingtree
 Collingtree
 Northants
 NN4 0NB
 England

P: (Phone) 01604 858 522

Complaints Contact

Karen Wright
 Customer Care Admin Assistant
 kwright@centralfoods.co.uk

P: (Phone) 01604 878 299

Technical Contact

Chris Stobart
 Technical Manager
 technical@centralfoods.co.uk

P: (Phone) 01604 878 276

Commercial Contact

Oliver Sampson
 Commercial Manager
 osampson@centralfoods.co.uk

P: (Phone) 07715 073 273

The information on the [Erudus System](#) has been supplied by the manufacturers of the products and, whilst the owners of the Erudus System take steps to ensure the information is regularly updated, they give no warranty and no guarantee that the information is accurate. Product information and ingredients may change, please always read product labels carefully in addition to using the information provided by Erudus.

We do not accept liability for any inaccuracies or incorrect information contained on this site.
 Please visit <http://www.erudus.com/terms-and-conditions> for full terms and conditions.