

# Kara White Deli Rolls 36x100g

KARA WHITE DELI ROLLS 6x6

## PRODUCT DESCRIPTION

A pre sliced white deli roll topped with semolina

<b>Brand</b>	Kara Foodservice (Fletchers)
<b>Manufacturer Product Code</b>	F02406
<b>Product Type</b>	Food
<b>Product Category</b>	Bread and Bread Products
<b>Storage Type</b>	Frozen
<b>Erudus ID</b>	536ce761ede34730b847c64f577e28e6
<b>Specification Type</b>	Legacy
<b>Outer Case GTIN</b>	05051788124063



## INGREDIENTS

### Ingredient Declaration

**Wheat** Flour (**WHEAT** Flour, Calcium Carbonate, Niacin, Iron, Thiamin), Water, **WHEAT** Semolina, Palm Oil, Sugar, Yeast (Yeast, Deactivated Yeast), Salt, Malted **WHEAT** Flour, **WHEAT** germ Flour, **WHEAT** Flour, Flour Treatment Agent (E300).

## ALLERGENS

Product Contains:

<b>Celery/Celery</b>	No	<b>Mustard</b>	No
<b>Cereals Containing Gluten</b>	Yes	<b>Nuts (Tree)</b>	No
<b>Barley</b>	May Contain	<b>Almond nuts</b>	No
<b>Oats</b>	May Contain	<b>Brazil nuts</b>	No
<b>Rye</b>	May Contain	<b>Cashew nuts</b>	No
<b>Wheat (including Spelt and Khorasan)</b>	Yes	<b>Hazelnuts</b>	No
<b>Gluten content &lt;20ppm</b>	No	<b>Macadamia (Queensland) nuts</b>	No
<b>Crustacea</b>	No	<b>Pecan nuts</b>	No
<b>Eggs</b>	May Contain	<b>Pistachio nuts</b>	No
<b>Fish</b>	No	<b>Walnuts</b>	No
<b>Lupin</b>	No	<b>Peanuts</b>	No
<b>Milk</b>	May Contain	<b>Sesame Seeds</b>	May Contain
<b>Molluscs</b>	No	<b>Soybeans</b>	May Contain
		<b>Sulphur Dioxide and Sulphites</b>	No

Risk Source:

## SUPPLEMENTARY INGREDIENT INFORMATION

<b>Palm Oil</b>	Yes
<b>Hydrogenated Vegetable Oil/Fat</b>	No
<b>GM Protein/DNA</b>	No

## ADDITIVES

Product Contains:

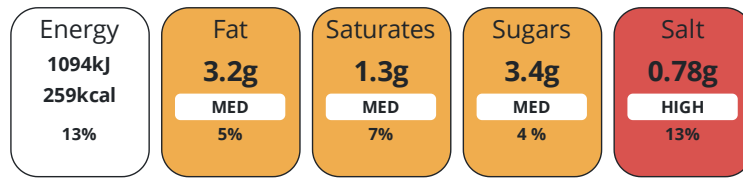
<b>Artificial Antioxidants</b>	No	<b>Artificial Flavourings</b>	No
<b>Artificial Colours</b>	No	<b>Artificial Preservatives</b>	No
<b>Artificial Flavour Enhancers</b>	No	<b>Artificial Sweeteners</b>	No

DIET  
SUITABILITY

<b>Suitable for Coeliacs</b>	No	<b>Halal Diet</b>	No
<b>Kosher Diet</b>	No	<b>Vegetarian Diet</b>	Suitable for
<b>Vegan Diet</b>	No		

NUTRITIONAL  
INFORMATION

Each 100g/ml portion contains:



of your reference intake.

Typical values per 100g/ml : Energy 259kcal / 1094kJ

Nutrient	per 100g/ml	RI per 100g/ml	per 100g/ml serving	RI per 100g/ml serving
<b>Energy (kj)</b>	1094 kj	13%	1094 kj	13%
<b>Energy (kcal)</b>	259 kcal	13%	259 kcal	13%
<b>Fat</b>	3.2 g	5%	3.2 g	5%
<b>of which Saturates</b>	1.3 g	7%	1.3 g	7%
<b>of which Mono-unsaturates</b>	1.1 g		1.1 g	
<b>of which Polyunsaturates</b>	0.6 g		0.6 g	
<b>Carbohydrate</b>	47.9 g	18%	47.9 g	18%
<b>of which Sugars</b>	3.4 g	4%	3.4 g	4%
<b>of which Starch</b>	44.5 g		44.5 g	
<b>Fibre</b>	3.5 g		3.5 g	
<b>Protein</b>	8 g	16%	8 g	16%
<b>Salt</b>	0.78 g	13%	0.8 g	13%
<b>Sodium</b>	312 mg		312 mg	

**Serving Size** 100 g

SUPPLEMENTARY  
NUTRITIONAL  
INFORMATION

**Trans Fats per 100 g/ml** 0.1 g

HANDLING &  
STORAGE  
INFORMATION

**Directions For Use**

Directions For Use : Store Frozen at -18°C or below. To defrost: remove from the case and leave in the pack at room temperature for 2 hours, or until fully defrosted. Once defrosted do not refreeze.

**Storage Instructions**

Storage Instructions : Once defrosted, store in a container, in a cool dry place away from direct sunlight. Once defrosted use within 48 hours.

**Shelf Life from Time of Production** 365 Days

ACCREDITATIONS/  
CERTIFICATIONS/  
ASSURANCE  
SCHEMES



ORIGIN

**Product Country of Origin/Place of Provenance** United Kingdom

PRODUCT CHARACTERISTICS

Standards Testing

**Do you undertake trend analysis of microbiological results?** No

**Is shelf life testing undertaken?** Yes

Microbiological Standards

Organism	Description	Frequency	Target	Maximum	Sample (g or ml)
Bacillus Cereus (cfu/g or ml)		Annually	<10	100	-
E. Coli (cfu/g or ml)		Annually	<10	100	-
Enterobacteriaceae (cfu/g or ml)		Annually	<10	100	-
Staphylococcus Aureus (cfu/g or ml)		Annually	<20	100	-
Total Viable Count (TVC) (cfu/g or ml)		Annually	<1000	10000	-
Yeast (cfu/g or ml)		Annually	<100	10000	-
Moulds (cfu/g or ml)		Annually	<100	10000	-

Physical Standards

Test	Description	Frequency	Target	Range	Sample (g or ml)
Dimensions Height (mm)		Hourly	=55	50 to 55	-
Dimensions Length (mm)		Hourly	=165	155 to 175	-
Dimensions Width (mm)		Hourly	=90	85 to 95	-
Weight (g)		Hourly	=100	95 to 105	-

CONFIGURATION

Case Configuration

**Total Quantity of Inner Components in Outer Case** 36 Units

Inner Pack Configuration

**Count per Inner Component** 6

PRODUCT WEIGHTS

Inner Component

**Variable Weight Consumer Item** No  
**Inner Component Weight** 100 g

Outer Case

**Outer Case Gross Weight** 3.96 kg  
**Outer Case Net Weight** 3.6 kg

PRODUCT DIMENSIONS

Inner Component

**Inner Component Depth** 165 mm  
**Inner Component Width** 90 mm  
**Inner Component Height** 55 mm

Outer Case

**Outer Case Depth** 548 mm  
**Outer Case Width** 240 mm  
**Outer Case Height** 202 mm

PALLET INFORMATION

**Quantity of Cases Per Pallet Layer** 8 Cases  
**Quantity of Layers Per Pallet** 8 Layers  
**Quantity of Cases Per Pallet** 64 Cases

**Pallet Height** 1.78 MTR  
**Pallet Gross Weight** 281.78 kg

PACKAGING

Inner Component Packaging

Type	Materials	Weight	Recycled Plastic %	Recyclable	Returnable	Composite
Bag	Plastic	6.9 g	- %			

Outer Case Packaging

Type	Materials	Weight	Recycled Plastic %	Recyclable	Returnable	Composite
Case	Plastic	3 g	- %			
Case	Paper/Cardboard	317 g	- %			

Transport Packaging

Type	Materials	Weight	Recycled Plastic %	Recyclable	Returnable	Composite
Other	Plastic	250 g	- %		Yes	
Other	Wood	28000 g	- %		Yes	

OTHER INFORMATION

<b>Intrastat/Taric Code</b>	7010
<b>Commodity Code</b>	1905908000

CONTACT INFORMATION

Address  
 Kara Foodservice (Fletchers)  
 Park Seventeen  
 Moss Lane  
 Whitefield  
 Manchester  
 M45 8FJ  
 England

P: (Phone) 0161 766 7471

The information on the [Erudus System](#) has been supplied by the manufacturers of the products and, whilst the owners of the Erudus System take steps to ensure the information is regularly updated, they give no warranty and no guarantee that the information is accurate. Product information and ingredients may change, please always read product labels carefully in addition to using the information provided by Erudus.

We do not accept liability for any inaccuracies or incorrect information contained on this site.  
 Please visit <http://www.erudus.com/terms-and-conditions> for full terms and conditions.