

Kara Wholemeal Deli Rolls 36x100g

KARA WHOLEMEAL DELI ROLLS 6x6

PRODUCT DESCRIPTION

A pre sliced wholemeal deli roll topped with semolina

Brand	Kara Foodservice (Fletchers)
Manufacturer Product Code	F02407
Product Type	Food
Product Category	Bread and Bread Products
Storage Type	Frozen
Erudus ID	260619e5f1bd4db19cfc5f0bd118cb75
Specification Type	Legacy
Outer Case GTIN	05051788124070



INGREDIENTS

Ingredient Declaration

Wholemeal **WHEAT** Flour, Water, **WHEAT** Semolina, Palm Oil, **Wheat** Flour (**WHEAT** Flour, Calcium Carbonate, Niacin, Iron, Thiamin), Sugar, Yeast (Yeast, Deactivated Yeast), Salt, Flour Treatment Agent (E300).

ALLERGENS

Product Contains:

Celery/Celery	No	Mustard	No
Cereals Containing Gluten	Yes	Nuts (Tree)	No
Barley	May Contain	Almond nuts	No
Oats	May Contain	Brazil nuts	No
Rye	May Contain	Cashew nuts	No
Wheat (including Spelt and Khorasan)	Yes	Hazelnuts	No
Gluten content <20ppm	No	Macadamia (Queensland) nuts	No
Crustacea	No	Pecan nuts	No
Eggs	May Contain	Pistachio nuts	No
Fish	No	Walnuts	No
Lupin	No	Peanuts	No
Milk	May Contain	Sesame Seeds	May Contain
Molluscs	No	Soybeans	May Contain
		Sulphur Dioxide and Sulphites	No

Risk Source:

SUPPLEMENTARY INGREDIENT INFORMATION

Palm Oil	Yes
Hydrogenated Vegetable Oil/Fat	No
GM Protein/DNA	No

ADDITIVES

Product Contains:

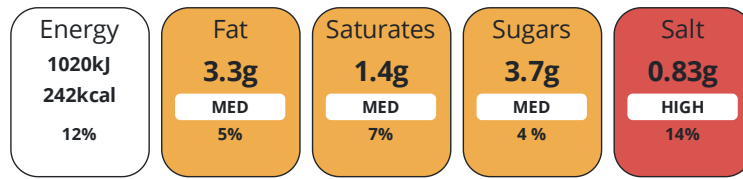
Artificial Antioxidants	No	Artificial Flavourings	No
Artificial Colours	No	Artificial Preservatives	No
Artificial Flavour Enhancers	No	Artificial Sweeteners	No

DIET
SUITABILITY

Suitable for Coeliacs	No	Halal Diet	No
Kosher Diet	No	Vegetarian Diet	Suitable for
Vegan Diet	No		

NUTRITIONAL
INFORMATION

Each 100g/ml portion contains:



of your reference intake.

Typical values per 100g/ml : Energy 242kcal / 1020kj

Nutrient	per 100g/ml	RI per 100g/ml	per 100g/ml serving	RI per 100g/ml serving
Energy (kj)	1020 kj	12%	1020 kj	12%
Energy (kcal)	242 kcal	12%	242 kcal	12%
Fat	3.3 g	5%	3.3 g	5%
of which Saturates	1.4 g	7%	1.4 g	7%
of which Mono-unsaturates	1.1 g		1.1 g	
of which Polyunsaturates	0.6 g		0.6 g	
Carbohydrate	40.2 g	15%	40.2 g	15%
of which Sugars	3.7 g	4%	3.7 g	4%
of which Starch	36.5 g		36.5 g	
Fibre	7.2 g		7.2 g	
Protein	9.3 g	19%	9.3 g	19%
Salt	0.83 g	14%	0.8 g	13%
Sodium	330 mg		330 mg	

Serving Size 100 g

SUPPLEMENTARY
NUTRITIONAL
INFORMATION

Trans Fats per 100 g/ml 0.1 g

HANDLING &
STORAGE
INFORMATION

Directions For Use

Store Frozen at -18°C or below. To defrost: remove from the case and leave in the pack at room temperature for 2 hours, or until fully defrosted. Once defrosted do not refreeze.

Storage Instructions

Once defrosted, store in a container, in a cool dry place away from direct sunlight. Once defrosted use within 48 hours.

Shelf Life from Time of Production 365 Days

ACCREDITATIONS/
CERTIFICATIONS/
ASSURANCE
SCHEMES



ORIGIN

Product Country of Origin/Place of United Kingdom

Provenance

Standards Testing

PRODUCT
CHARACTERISTICS

	Do you undertake trend analysis of microbiological results?	No		Is shelf life testing undertaken?	Yes		
	Microbiological Standards						
	Organism	Description	Frequency	Target	Maximum	Sample (g or ml)	
	Bacillus Cereus (cfu/g or ml)		Annually	<10	100	-	
	E. Coli (cfu/g or ml)		Annually	<10	100	-	
	Enterobacteriaceae (cfu/g or ml)		Annually	<10	100	-	
	Total Viable Count (TVC) (cfu/g or ml)		Annually	<1000	10000	-	
	Yeast (cfu/g or ml)		Annually	<100	10000	-	
	Moulds (cfu/g or ml)		Annually	<100	10000	-	
	Physical Standards						
	Test	Description	Frequency	Target	Range	Sample (g or ml)	
	Dimensions Height (mm)		Hourly	=55	50 to 60	-	
	Dimensions Length (mm)		Hourly	=165	155 to 175	-	
	Dimensions Width (mm)		Hourly	=90	85 to 95	-	
	Weight (g)		Hourly	=100	95 to 105	-	
CONFIGURATION	Case Configuration			Inner Pack Configuration			
	Total Quantity of Inner Components in Outer Case	36 Units		Count per Inner Component		6	
PRODUCT WEIGHTS	Inner Component						
	Variable Weight Consumer Item	No					
	Inner Component Weight	100 g					
	Outer Case						
	Outer Case Gross Weight	3.95 kg					
	Outer Case Net Weight	3.6 kg					
PRODUCT DIMENSIONS	Inner Component						
	Inner Component Depth	165 mm					
	Inner Component Width	90 mm					
	Inner Component Height	55 mm					
	Outer Case						
	Outer Case Depth	548 mm					
	Outer Case Width	240 mm					
	Outer Case Height	202 mm					
PALLET INFORMATION	Quantity of Cases Per Pallet Layer	8 Cases		Pallet Height		1.78 MTR	
	Quantity of Layers Per Pallet	8 Layers		Pallet Gross Weight		281.78 kg	
	Quantity of Cases Per Pallet	64 Cases					
PACKAGING	Inner Component Packaging						
	Type	Materials	Weight	Recycled Plastic %	Recyclable	Returnable	Composite
	Bag	Plastic	6.9 g	- %			

Outer Case Packaging

Type	Materials	Weight	Recycled Plastic %	Recyclable	Returnable	Composite
Case	Plastic	3 g	- %			
Case	Paper/Cardboard	317 g	- %			

Transport Packaging

Type	Materials	Weight	Recycled Plastic %	Recyclable	Returnable	Composite
Other	Plastic	250 g	- %		Yes	
Other	Wood	28000 g	- %		Yes	

OTHER INFORMATION

Intrastat/Taric Code	7010
Commodity Code	1905908000

CONTACT INFORMATION

Address
 Kara Foodservice (Fletchers)
 Park Seventeen
 Moss Lane
 Whitefield
 Manchester
 M45 8FJ
 England

P: (Phone) 0161 766 7471

The information on the [Erudus System](#) has been supplied by the manufacturers of the products and, whilst the owners of the Erudus System take steps to ensure the information is regularly updated, they give no warranty and no guarantee that the information is accurate. Product information and ingredients may change, please always read product labels carefully in addition to using the information provided by Erudus.

We do not accept liability for any inaccuracies or incorrect information contained on this site.
 Please visit <http://www.erudus.com/terms-and-conditions> for full terms and conditions.