

Vegetable Sausages (30 X 56g)

Vegetable Sausages (30 x 56g)

PRODUCT DESCRIPTION

Lightly seasoned meat free sausage made with onion, carrot and broccoli mixed with white rice.

Brand	The Foodfellas
Manufacturer Product Code	900165
Product Type	Food
Product Category	Other
Storage Type	Frozen
Erudus ID	d0b241186842464cbda668c10b6c15db
Specification Type	Legacy



Inner Component GTIN 05030755997466



INGREDIENTS

Ingredient Declaration

Vegetables (43%) (Onion, Carrot, Broccoli), White Rice, Water, Dried Potato, **WHEAT** Flour (**WHEAT** Flour, Calcium Carbonate, Iron, Niacin, Thiamin), Potato Starch, Salt, Yeast Extract, Onion Powder, Parsley, Sugar, Vegetable Bouillon (Cornflour, Salt, Yeast Extract, Parsnip, Onion, Sugar, Sunflower Oil, Spices (**CELERY**, White Pepper, Garlic, Mace, Lovage, Nutmeg), Parsley, Spice Extract), Garlic, Nutmeg, Acidity Regulator (Citric Acid).

ALLERGENS

Product Contains:

Celery/Celeriac	Yes	Mustard	No
Cereals Containing Gluten	Yes	Nuts (Tree)	No
Barley	No	Almond nuts	No
Oats	No	Brazil nuts	No
Rye	No	Cashew nuts	No
Wheat (including Spelt and Khorasan)	Yes	Hazelnuts	No
Gluten content <20ppm	No	Macadamia (Queensland) nuts	No
Crustacea	No	Pecan nuts	No
Eggs	No	Pistachio nuts	No
Fish	No	Walnuts	No
Lupin	No	Peanuts	No
Milk	No	Sesame Seeds	No
Molluscs	No	Soybeans	No
		Sulphur Dioxide and Sulphites	No

SUPPLEMENTARY INGREDIENT INFORMATION

Palm Oil	No
Hydrogenated Vegetable Oil/Fat	No
GM Protein/DNA	No

ADDITIVES

Product Contains:

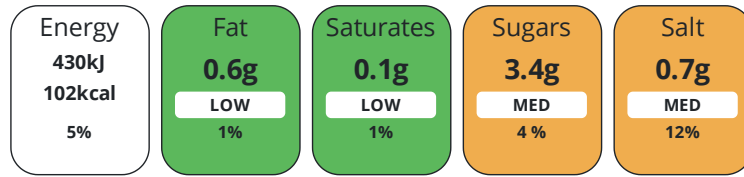
Artificial Antioxidants	No	Artificial Flavourings	No
Artificial Colours	No	Artificial Preservatives	No
Artificial Flavour Enhancers	No	Artificial Sweeteners	No

DIET
SUITABILITY

Suitable for Coeliacs	No	Halal Diet	No
Kosher Diet	No	Vegetarian Diet	Suitable for
Vegan Diet	Suitable for		

NUTRITIONAL
INFORMATION

Each 100g/ml portion contains:



of your reference intake.

Typical values per 100g/ml : Energy 102kcal / 430kj

Nutrient	per 100g/ml	RI per 100g/ml
Energy (kJ)	430 kJ	5%
Energy (kcal)	102 kcal	5%
Fat	0.6 g	1%
of which Saturates	0.1 g	1%
Carbohydrate	19.5 g	8%
of which Sugars	3.4 g	4%
Fibre	3 g	
Protein	3.1 g	6%
Salt	0.7 g	12%
Sodium	280 mg	

SUPPLEMENTARY
NUTRITIONAL
INFORMATION

HANDLING &
STORAGE
INFORMATION

Directions For Use

For best results cook from frozen. Remove product from packaging. Deep Fry: Fry in hot oil or fat (160°C) for approximately 7 minutes. Drain well before serving. Ensure food is piping hot before serving.

Storage Instructions

Keep Frozen at -18C or below.

Shelf Life from Time of Production 548 Days

ACCREDITATIONS/
CERTIFICATIONS/
ASSURANCE
SCHEMES



ORIGIN

Product Country of Origin/Place of United Kingdom

Provenance

Standards Testing

PRODUCT
CHARACTERISTICS

Do you undertake trend analysis of microbiological results?	No	Is shelf life testing undertaken?	No
--	----	--	----

Microbiological Standards

Organism	Description	Frequency	Target	Maximum	Sample (g or ml)
E. Coli (cfu/g or ml)		Monthly	<10	100	1

	Organism	Description	Frequency	Target	Maximum	Sample (g or ml)
	Staphylococcus Aureus (cfu/g or ml)		Monthly	<20	20	1
CONFIGURATION	Case Configuration		Inner Pack Configuration			
	Total Quantity of Inner Components in Outer Case	1 Units				
	Is the Outer Case Splittable?	No				
PRODUCT WEIGHTS	Inner Component					
	Variable Weight Consumer Item	No				
	Weight/Volume					
	1.68kg (30 x 56g)					
	Outer Case					
	Outer Case Gross Weight	1.79 kg				
	Outer Case Net Weight	1.68 kg				
PRODUCT DIMENSIONS	Inner Component					
	Inner Component Depth	230 mm				
	Inner Component Width	187 mm				
	Inner Component Height	127 mm				
	Outer Case					
	Outer Case Depth	230 mm				
	Outer Case Width	187 mm				
	Outer Case Height	127 mm				
PALLET INFORMATION	Quantity of Cases Per Pallet Layer	26 Cases	Pallet Height	1.67 MTR		
	Quantity of Layers Per Pallet	12 Layers	Pallet Gross Weight	578.3 kg		
	Quantity of Cases Per Pallet	312 Cases				
PACKAGING	Inner Component Packaging					
	Type	Materials	Weight	Recycled Plastic %	Recyclable	Returnable Composite
	Box	Plastic	14 g	- %		
	Outer Case Packaging					
	Type	Materials	Weight	Recycled Plastic %	Recyclable	Returnable Composite
	Case	Paper/Cardboard	0.09 g	- %		
	Transport Packaging					
	Type	Materials	Weight	Recycled Plastic %	Recyclable	Returnable Composite
	Other	Plastic	600 g	- %		
	Other	Wood	19200 g	- %		
OTHER INFORMATION	Commodity Code	2106909855				

CONTACT
INFORMATION

Address

The Foodfellas
6-9 The Square
Stockley Park East
Uxbridge
Middx
UB11 1FW
England

P. (Phone) +44 204 526 6777

The information on the [Erudus System](#) has been supplied by the manufacturers of the products and, whilst the owners of the Erudus System take steps to ensure the information is regularly updated, they give no warranty and no guarantee that the information is accurate. Product information and ingredients may change, please always read product labels carefully in addition to using the information provided by Erudus.

We do not accept liability for any inaccuracies or incorrect information contained on this site.
Please visit <http://www.erudus.com/terms-and-conditions> for full terms and conditions.