

# Kara Mk4 Floured Bap 4 X 12

Kara MK4 Floured Bap 4 x 12

## PRODUCT DESCRIPTION

A soft white bread bap, dusted with flour.

<b>Brand</b>	Kara Foodservice (Fletchers)
<b>Manufacturer Product Code</b>	F00266
<b>Product Type</b>	Food
<b>Product Category</b>	Bread and Bread Products
<b>Storage Type</b>	Frozen
<b>Erudus ID</b>	2a83be51a1774f03b76699f40673e317
<b>Specification Type</b>	Legacy
<b>Outer Case GTIN</b>	5011639001165



## INGREDIENTS

### Ingredient Declaration

**WHEAT** Flour (**WHEAT** Flour, Calcium Carbonate, Iron, Niacin & Thiamin), Water, Salt, Yeast, Sugar, Rapeseed Oil, Emulsifiers: E471, E472(e). Flour Treatment Agents: E300, E920.

## ALLERGENS

Product Contains:

<b>Celery/Celery</b>	No	<b>Mustard</b>	No
<b>Cereals Containing Gluten</b>	Yes	<b>Nuts (Tree)</b>	No
<b>Barley</b>	No	<b>Almond nuts</b>	No
<b>Oats</b>	No	<b>Brazil nuts</b>	No
<b>Rye</b>	No	<b>Cashew nuts</b>	No
<b>Wheat (including Spelt and Khorasan)</b>	Yes	<b>Hazelnuts</b>	No
<b>Gluten content &lt;20ppm</b>	No	<b>Macadamia (Queensland) nuts</b>	No
<b>Crustacea</b>	No	<b>Pecan nuts</b>	No
<b>Eggs</b>	No	<b>Pistachio nuts</b>	No
<b>Fish</b>	No	<b>Walnuts</b>	No
<b>Lupin</b>	No	<b>Peanuts</b>	No
<b>Milk</b>	No	<b>Sesame Seeds</b>	May Contain
<b>Molluscs</b>	No	<b>Soybeans</b>	No
		<b>Sulphur Dioxide and Sulphites</b>	No

Risk Source:

## SUPPLEMENTARY INGREDIENT INFORMATION

<b>Palm Oil</b>	No
<b>Hydrogenated Vegetable Oil/Fat</b>	No
<b>GM Protein/DNA</b>	No

## ADDITIVES

Product Contains:

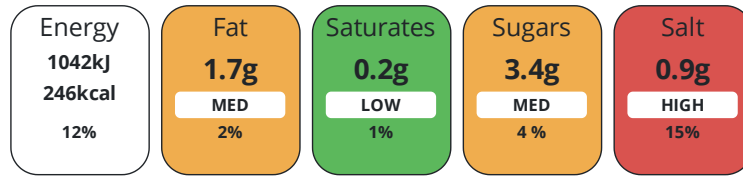
<b>Artificial Antioxidants</b>	No	<b>Artificial Flavourings</b>	No
<b>Artificial Colours</b>	No	<b>Artificial Preservatives</b>	No
<b>Artificial Flavour Enhancers</b>	No	<b>Artificial Sweeteners</b>	No

DIET  
SUITABILITY

<b>Suitable for Coeliacs</b>	No	<b>Halal Diet</b>	No
<b>Kosher Diet</b>	No	<b>Vegetarian Diet</b>	Suitable for
<b>Vegan Diet</b>	Suitable for		

NUTRITIONAL  
INFORMATION

Each 100g/ml portion contains:



of your reference intake.

Typical values per 100g/ml : Energy 246kcal / 1042kj

Nutrient	per 100g/ml	RI per 100g/ml	per 50g/ml serving	RI per 50g/ml serving
<b>Energy (kj)</b>	1042 kj	12%	521 kj	6%
<b>Energy (kcal)</b>	246 kcal	12%	123 kcal	6%
<b>Fat</b>	1.7 g	2%	0.9 g	1%
<b>of which Saturates</b>	0.2 g	1%	0.1 g	1%
<b>of which Mono-unsaturates</b>	0.7 g		0.4 g	
<b>of which Polyunsaturates</b>	0.8 g		0.4 g	
<b>Carbohydrate</b>	46.9 g	18%	23.5 g	9%
<b>of which Sugars</b>	3.4 g	4%	1.7 g	2%
<b>Fibre</b>	3.3 g		1.7 g	
<b>Protein</b>	9 g	18%	4.5 g	9%
<b>Salt</b>	0.9 g	15%	0.5 g	8%
<b>Sodium</b>	346 mg		173 mg	

**Serving Size** 50 g

SUPPLEMENTARY  
NUTRITIONAL  
INFORMATION

HANDLING &  
STORAGE  
INFORMATION

**Directions For Use**

Defrost thoroughly before use. Remove from case and leave in bag at room temperature for 1 – 2 hours, or until fully defrosted. Once defrosted, store in a sealed pack in a cool, dry place away from direct sunlight. Once defrosted use within 4 days. Do not refreeze.

**Storage Instructions**

Keep frozen, store frozen at -18°C (0°F) or below. Once defrosted do not refreeze.

**Shelf Life from Time of Production** 365 Days

ACCREDITATIONS/  
CERTIFICATIONS/  
ASSURANCE  
SCHEMES



**Other Accreditation**

N/A

ORIGIN	<b>Product Country of Origin/Place of Provenance</b>	United Kingdom				
PRODUCT CHARACTERISTICS	<b>Additional Origin Details</b>	N/A				
	Standards Testing					
	<b>Do you undertake trend analysis of microbiological results?</b>	No	<b>Is shelf life testing undertaken?</b>	Yes		
	Microbiological Standards					
	<b>Organism</b>	<b>Description</b>	<b>Frequency</b>	<b>Target</b>	<b>Maximum</b>	<b>Sample (g or ml)</b>
	Bacillus Cereus (cfu/g or ml)		Annually	<10	100	-
	E. Coli (cfu/g or ml)		Annually	<10	100	-
	Enterobacteriaceae (cfu/g or ml)		Annually	<10	1000	-
	Staphylococcus Aureus (cfu/g or ml)		Annually	<20	100	-
	Total Viable Count (TVC) (cfu/g or ml)		Annually	<1000	100000	-
Yeast (cfu/g or ml)		Annually	<100	10000	-	
Moulds (cfu/g or ml)		Annually	<100	10000	-	
Analytical Standards						
<b>Test</b>	<b>Description</b>	<b>Frequency</b>	<b>Target</b>	<b>Range</b>	<b>Sample (g or ml)</b>	
Fat Content (%) (%)		Annually	=0.9	0.9 to 0.9	-	
Salt Content (%)		Annually	=0.5	0.5 to 0.5	-	
Calorie Content (kcal)		Annually	=123	123 to 123	-	
Sugar Content (%)		Annually	=1.7	1.7 to 1.7	-	
Physical Standards						
<b>Test</b>	<b>Description</b>	<b>Frequency</b>	<b>Target</b>	<b>Range</b>	<b>Sample (g or ml)</b>	
Dimensions Diameter (mm)		Hourly	<101	98 to 104	-	
Dimensions Height (mm)		Hourly	<42	39 to 45	-	
Weight (g)		Hourly	<50	45 to 55	-	
CONFIGURATION	Case Configuration	Inner Pack Configuration				
	<b>Total Quantity of Inner Components in Outer Case</b>	48 Units				
	<b>Is the Outer Case Splittable?</b>	No				
PRODUCT WEIGHTS	Inner Component					
	<b>Variable Weight Consumer Item</b>	No				
	<b>Weight/Volume</b>	7.9G				
	Outer Case					
	<b>Outer Case Gross Weight</b>	2.73 kg				
	<b>Outer Case Net Weight</b>	2.16 kg				

PRODUCT DIMENSIONS

Inner Component	
<b>Inner Component Depth</b>	460 mm
<b>Inner Component Width</b>	265 mm
<b>Inner Component Height</b>	90 mm
Outer Case	
<b>Outer Case Depth</b>	400 mm
<b>Outer Case Width</b>	300 mm
<b>Outer Case Height</b>	180 mm

PALLET INFORMATION

<b>Quantity of Cases Per Pallet Layer</b>	10 Cases	<b>Pallet Height</b>	1.96 MTR
<b>Quantity of Layers Per Pallet</b>	10 Layers	<b>Pallet Gross Weight</b>	301.2 kg
<b>Quantity of Cases Per Pallet</b>	100 Cases		

PACKAGING

Inner Component Packaging						
Type	Materials	Weight	Recycled Plastic %	Recyclable	Returnable	Composite
Bag	Plastic	7.9 g	- %			
Outer Case Packaging						
Type	Materials	Weight	Recycled Plastic %	Recyclable	Returnable	Composite
Case	Paper/Cardboard	332 g	- %			
Transport Packaging						
Type	Materials	Weight	Recycled Plastic %	Recyclable	Returnable	Composite
Other	Wood	28200 g	- %			

OTHER INFORMATION

**Manufacturer Comments**

N/A

CONTACT INFORMATION

Address  
 Kara Foodservice (Fletchers)  
 Park Seventeen  
 Moss Lane  
 Whitefield  
 Manchester  
 M45 8FJ  
 England

P: (Phone) 0161 766 7471

The information on the [Erudus System](#) has been supplied by the manufacturers of the products and, whilst the owners of the Erudus System take steps to ensure the information is regularly updated, they give no warranty and no guarantee that the information is accurate. Product information and ingredients may change, please always read product labels carefully in addition to using the information provided by Erudus.

We do not accept liability for any inaccuracies or incorrect information contained on this site. Please visit <http://www.erudus.com/terms-and-conditions> for full terms and conditions.