

910052

Proper Good Pork Sausage 4s

Pork Sausage 4s 40x4540g

PRODUCT DESCRIPTION
40 Pork Sausages lightly seasoned with a mix of herbs, filled into a beef collagen casing.

Brand	Karro Food Group
Manufacturer Product Code	F1960
Product Type	Food
Product Category	Deli Meats & Processed Meats
Storage Type	Frozen
Erudus ID	5d1a17461eda459fb925924ea244901b
Specification Type	Legacy
Outer Case GTIN	5060125541227



INGREDIENTS

Ingredient Declaration
Pork (42%), Water, Rusk (**WHEAT** Flour, Salt), Pork Rind, Salt, Pork Fat, Stabiliser (Triphosphate), Yeast Extract, Dextrose, Preservative (Sodium **SULPHITE**), Flavourings (Pepper, Ginger, Nutmeg, Coriander, Sage, Mace), Antioxidant (Ascorbic Acid). Filled into Beef Casings (Collagen, Water, Cellulose).

ALLERGENS

Product Contains:			
Celery/Celeriac	No	Mustard	No
Cereals Containing Gluten	Yes	Nuts (Tree)	No
Barley	No	Almond nuts	No
Oats	No	Brazil nuts	No
Rye	No	Cashew nuts	No
Wheat (including Spelt and Khorasan)	Yes	Hazelnuts	No
Gluten content <20ppm	No	Macadamia (Queensland) nuts	No
Crustacea	No	Pecan nuts	No
Eggs	No	Pistachio nuts	No
Fish	No	Walnuts	No
Lupin	No	Peanuts	No
Milk	No	Sesame Seeds	No
Molluscs	No	Soybeans	No
		Sulphur Dioxide and Sulphites	Yes

Additional Allergen Information
For allergens, including cereals containing Gluten, see ingredients in BOLD.

SUPPLEMENTARY INGREDIENT INFORMATION

Palm Oil	No
Hydrogenated Vegetable Oil/Fat	No
GM Protein/DNA	No

ADDITIVES

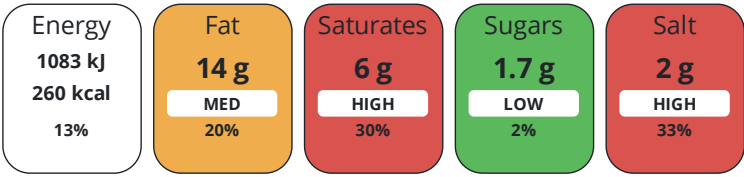
Product Contains:

Artificial Antioxidants	Yes	Artificial Flavourings	No
Artificial Colours	No	Artificial Preservatives	Yes
Artificial Flavour Enhancers	No	Artificial Sweeteners	No
Suitable for Coeliacs	No	Halal Diet	No
Kosher Diet	No	Vegetarian Diet	No
Vegan Diet	No		

DIET
SUITABILITY

NUTRITIONAL
INFORMATION

Each 100g/ml portion contains:



of your reference intake.

Typical values per 100g/ml : Energy 260kcal / 1083kJ

Nutrient	per 100g/ml	RI per 100g/ml
Energy (kJ)	1083 kJ	13%
Energy (kcal)	260 kcal	13%
Fat	14 g	20%
of which Saturates	6 g	30%
Carbohydrate	11 g	4%
of which Sugars	1.7 g	2%
Fibre	1 g	
Protein	12 g	24%
Salt	2 g	33%

SUPPLEMENTARY
NUTRITIONAL
INFORMATION

HANDLING &
STORAGE
INFORMATION

Directions For Use

For best results this product should be deep fried in hot oil at 180°C for approximately 8-9 minutes. This is a raw product. Cook thoroughly until piping hot throughout and no pink colour remains.

Storage Instructions

STORE AT -18°C OR COLDER. DO NOT REFREEZE ONCE THAWED.

Shelf Life from Time of Production	365 Days
------------------------------------	----------

BRCGS Certified

ACCREDITATIONS/
CERTIFICATIONS/
ASSURANCE
SCHEMES
ORIGIN

Product Country of Origin/Place of Provenance	United Kingdom
---	----------------

Additional Origin Details

Using Pork from the EU

PRODUCT
CHARACTERISTICS

Standards Testing		
Do you undertake trend analysis of microbiological results?	Yes	Is shelf life testing undertaken? Yes
Microbiological Standards		

	Organism		Description		Frequency	Target	Maximum	Sample (g or ml)	
	E. Coli (cfu/g or ml)		Every 3rd production		Monthly	<500	5000	-	
	Salmonella (cfu/g or ml)		Every 3rd production		Monthly	=0	0	-	
	Analytical Standards								
	Test		Description		Frequency	Target	Range	Sample (g or ml)	
	Fat Content (%)				Quarterly	=14	11.2 to 16.8	-	
	Salt Content (%)				Quarterly	=2	1.6 to 2.4	-	
	Calorie Content (kcal)		Outside of EU tolerances		Annually	=260	234 to 286	-	
	Physical Standards								
	Test		Description		Frequency	Target	Range	Sample (g or ml)	
Dimensions Diameter (mm)				Hourly	=28	26 to 28	-		
Dimensions Length (mm)				Hourly	=195	190 to 200	-		
Weight (g)		weight of 2 sausages		Hourly	=226	225 to 227	-		
CONFIGURATION	Case Configuration				Inner Pack Configuration				
	Total Quantity of Inner Components in Outer Case		40 Units		Count per Inner Component			40	
	Is the Outer Case Splittable?		No						
PRODUCT WEIGHTS	Inner Component								
	Variable Weight Consumer Item		No						
	Inner Component Weight		4540 g						
	Weight/Volume		1 x 4.54kg = 4.54kg /case						
	Outer Case								
	Outer Case Gross Weight		4.69 kg						
	Outer Case Net Weight		4.54 kg						
PRODUCT DIMENSIONS	Inner Component								
	Inner Component Depth		194 mm						
	Inner Component Width		194 mm						
	Inner Component Height		181 mm						
	Outer Case								
	Outer Case Depth		194 mm						
	Outer Case Width		294 mm						
	Outer Case Height		181 mm						
PALLET INFORMATION	Quantity of Cases Per Pallet Layer		20 Cases		Pallet Height			1.6 MTR	
	Quantity of Layers Per Pallet		8 Layers		Pallet Gross Weight			869.2 kg	
	Quantity of Cases Per Pallet		160 Cases						
PACKAGING	Outer Case Packaging								
	Type	Materials		Weight	Recycled Plastic %		Recyclable	Returnable	Composite
	Case	Plastic		50 g	0.00 %				
	Case	Paper/Cardboard		150 g	- %				

Transport Packaging

Type	Materials	Weight	Recycled Plastic %	Recyclable	Returnable	Composite
Other	Plastic	1500 g	- %			
Other	Wood	25000 g	- %			

OTHER
INFORMATION

Identification/Health Marks	GB HU 500
-----------------------------	-----------

CONTACT
INFORMATION

Address
Karro Food Group
Liverpool Street
Kingston Upon Hull
East Yorkshire
HU3 4HW
England

P: (Phone) 01482 326234

The information on the [Erudus System](#) has been supplied by the manufacturers of the products and, whilst the owners of the Erudus System take steps to ensure the information is regularly updated, they give no warranty and no guarantee that the information is accurate. Product information and ingredients may change, please always read product labels carefully in addition to using the information provided by Erudus.

We do not accept liability for any inaccuracies or incorrect information contained on this site.
Please visit <http://www.erudus.com/terms-and-conditions> for full terms and conditions.