

S8105

Angel Delight Strawberry Flavour Dessert Mix 600g

Strawberry Flavour Dessert Mix 12x

PRODUCT DESCRIPTION

Strawberry flavour dessert mix

| | |
|---------------------------|----------------------------------|
| Brand | Premier Foods |
| Manufacturer Product Code | 1014231 |
| Product Type | Food |
| Product Category | Desserts |
| Storage Type | Ambient |
| Erudus ID | 638283ca3fc84640a94912f06731c5e7 |
| Specification Type | Legacy |



Inner Component GTIN 5000354916786



INGREDIENTS

Ingredient Declaration

Sugar, Skimmed **MILK** Powder, Modified Starch, Maltodextrin, Palm Oil, Gelling Agents (Diphosphates, Sodium Phosphates), Emulsifiers (Propylene Glycol Esters of Fatty Acids, Lecithins), Lactose (**MILK**), **MILK** Proteins, Calcium Carbonate, Whey Powder (**MILK**), Anti-caking Agent (Silicon Dioxide), Colours (Beetroot Red, Carotenes), Flavouring.

ALLERGENS

Product Contains:

| | | | |
|---|-----|--------------------------------------|----|
| Celery/Celery | No | Mustard | No |
| Cereals Containing Gluten | No | Nuts (Tree) | No |
| Barley | No | Almond nuts | No |
| Oats | No | Brazil nuts | No |
| Rye | No | Cashew nuts | No |
| Wheat (including Spelt and Khorasan) | No | Hazelnuts | No |
| Gluten content <20ppm | Yes | Macadamia (Queensland) nuts | No |
| Crustacea | No | Pecan nuts | No |
| Eggs | No | Pistachio nuts | No |
| Fish | No | Walnuts | No |
| Lupin | No | Peanuts | No |
| Milk | Yes | Sesame Seeds | No |
| Molluscs | No | Soybeans | No |
| | | Sulphur Dioxide and Sulphites | No |

Additional Allergen Information

For allergens, see ingredients in bold.

SUPPLEMENTARY
INGREDIENT
INFORMATION

| | |
|---------------------------------------|-----|
| Palm Oil | Yes |
| Hydrogenated Vegetable Oil/Fat | No |
| GM Protein/DNA | No |

ADDITIVES

Product Contains:

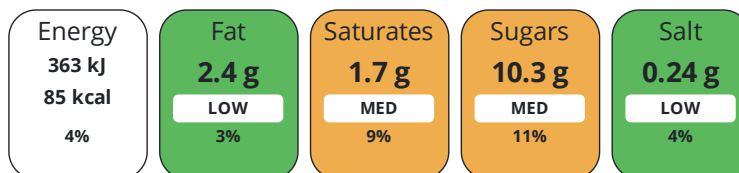
| | | | |
|-------------------------------------|----|---------------------------------|----|
| Artificial Antioxidants | No | Artificial Flavourings | No |
| Artificial Colours | No | Artificial Preservatives | No |
| Artificial Flavour Enhancers | No | Artificial Sweeteners | No |

DIET
SUITABILITY

| | | | |
|------------------------------|-----|------------------------|--------------|
| Suitable for Coeliacs | Yes | Halal Diet | No |
| Kosher Diet | No | Vegetarian Diet | Suitable for |
| Vegan Diet | No | | |

NUTRITIONAL
INFORMATION

Each 100g/ml portion contains:



of your reference intake.

Typical values per 100g/ml : Energy 85kcal / 363kj

| Nutrient | per 100g/ml | RI per 100g/ml | per 76g/ml serving | RI per 76g/ml serving |
|---------------------------|-------------|----------------|--------------------|-----------------------|
| Energy (kJ) | 363 kJ | 4% | 275.9 kJ | 3% |
| Energy (kcal) | 85 kcal | 4% | 64.6 kcal | 3% |
| Fat | 2.4 g | 3% | 1.8 g | 3% |
| of which Saturates | 1.7 g | 9% | 1.3 g | 7% |
| Carbohydrate | 13.5 g | 5% | 10.3 g | 4% |
| of which Sugars | 10.3 g | 11% | 7.8 g | 9% |
| Fibre | < 0.5 g | | 0.4 g | |
| Protein | 2.9 g | 6% | 2.2 g | 4% |
| Salt | 0.24 g | 4% | 0.2 g | 3% |
| Serving Size | 76 g | | | |

SUPPLEMENTARY
NUTRITIONAL
INFORMATION

HFSS (HIGH IN
FAT, SALT AND
SUGAR)

| | |
|--------------------|-----|
| HFSS Status | Yes |
|--------------------|-----|

HANDLING & STORAGE INFORMATION

Directions For Use

Make Up & Serving Instructions Using Milk To Make 10 portions = 150g Dessert Mix with 600ml Milk To Make 20 portions = 300g Dessert Mix with 1,200ml Milk To Make 26 portions = 390g Dessert Mix with 1,550ml Milk To Make 40 portions = 600g Dessert Mix with 2,400ml Milk Using Water To Make 10 portions = 230g Dessert Mix with 650ml Water To Make 20 portions = 460g Dessert Mix with 1,300ml Water To Make 26 portions = 600g Dessert Mix with 1,700ml Water This pack makes 26 x 110ml portions with water or 40 x 110ml portion with semi-skimmed milk. Once made up keep refrigerated and consume within 24 hours. 1. Pour required quantity of water or milk into a large mixing bowl. 2. Add required quantity of dessert mix, whisk for 30 seconds on low speed. 3. Scrape down. Whisk for 4 minutes on high speed. Leave to stand for 5 minutes before serving.

Storage Instructions

Store in a cool, dry place. Keep bag tightly closed after part use.

Shelf Life from Time of Production 270 Days

ACCREDITATIONS/ CERTIFICATIONS/ ASSURANCE SCHEMES



Other Accreditation

N/A

ORIGIN

Product Country of Origin/Place of Provenance United Kingdom

Additional Origin Details

N/A

PRODUCT CHARACTERISTICS

Standards Testing

Do you undertake trend analysis of microbiological results? Yes

Is shelf life testing undertaken? Yes

CONFIGURATION

Case Configuration

Inner Pack Configuration

Total Quantity of Inner Components in Outer Case 12 Units

Is the Outer Case Splittable? Yes

PRODUCT WEIGHTS

Inner Component

Variable Weight Consumer Item No

Weight/Volume

600g

Outer Case

Outer Case Gross Weight 8.15 kg

Outer Case Net Weight 7.2 kg

PRODUCT DIMENSIONS

Inner Component

Inner Component Depth 59 mm

Inner Component Width 142 mm

Inner Component Height 187 mm

Outer Case

Outer Case Depth 390 mm

Outer Case Width 295 mm

Outer Case Height 205 mm

PALLET INFORMATION

Quantity of Cases Per Pallet Layer 10 Cases

Pallet Height 1.23 MTR

Quantity of Layers Per Pallet 6 Layers

Pallet Gross Weight 519.18 kg

Quantity of Cases Per Pallet 60 Cases

PACKAGING

Inner Component Packaging

| Type | Materials | Weight | Recycled Plastic % | Recyclable | Returnable | Composite |
|--------|-----------------|--------|--------------------|------------|------------|-----------|
| Carton | Plastic | 8 g | - % | | | |
| Carton | Paper/Cardboard | 33 g | - % | | | |

Outer Case Packaging

| Type | Materials | Weight | Recycled Plastic % | Recyclable | Returnable | Composite |
|------|-----------------|--------|--------------------|------------|------------|-----------|
| Case | Paper/Cardboard | 400 g | - % | | | |

Transport Packaging

| Type | Materials | Weight | Recycled Plastic % | Recyclable | Returnable | Composite |
|-------|-----------|---------|--------------------|------------|------------|-----------|
| Other | Plastic | 150 g | - % | | Yes | |
| Other | Wood | 25000 g | - % | | Yes | |

OTHER INFORMATION

Manufacturer Comments

Per 100g as prepared with semi-skimmed milk GTIN outer case barcode not given as this recipe has been replaced with 1018465. Once this product 1014231 has sold through it will be removed from ERUDUS leaving the new recipe 1018465 only.

CONTACT INFORMATION

Address

Premier Foods
Premier Foods, Premier House
Centrium Business Park, Griffiths Way
St Albans
AL1 2RE
England

Technical Contact

Nicola Ratcliffe
Business Unit Coordinator
nicola.ratcliffe@premierfoods.co.uk

P. (Phone) 01727 815850

Complaints Contact

Consumer Relations Team
Customer Care
LCescalations@premierfoods.co.uk

The information on the [Erudus System](#) has been supplied by the manufacturers of the products and, whilst the owners of the Erudus System take steps to ensure the information is regularly updated, they give no warranty and no guarantee that the information is accurate. Product information and ingredients may change, please always read product labels carefully in addition to using the information provided by Erudus.

We do not accept liability for any inaccuracies or incorrect information contained on this site.
Please visit <http://www.erudus.com/terms-and-conditions> for full terms and conditions.