

RTSLFC

Ambrosia Light Devon Custard 30% Less Sugar & Fat 1kg

Light Devon Custard 12x

PRODUCT DESCRIPTION

Light Devon Custard - 30% Less Sugar & Fat 30% less fat & 30% less sugar than Ambrosia Devon Custard

Brand	Premier Foods
Manufacturer Product Code	1013936
Product Type	Food
Product Category	Desserts
Storage Type	Ambient
Erudus ID	740c53178e6d4ea18a83af87e96db476
Specification Type	Legacy
Inner Component GTIN	5000354915987
Outer Case GTIN	05000117920661



INGREDIENTS

Ingredient Declaration

Skimmed **MILK, BUTTERMILK**, Modified Starch, Sugar, Palm Oil, Whey (**MILK**), Natural Flavourings, Colours (Curcumin, Annatto Norbixin).

Total Milk Content 77%.

ALLERGENS

Product Contains:

Celery/Celeriac	No	Mustard	No
Cereals Containing Gluten	No	Nuts (Tree)	No
Barley	No	Almond nuts	No
Oats	No	Brazil nuts	No
Rye	No	Cashew nuts	No
Wheat (including Spelt and Khorasan)	No	Hazelnuts	No
Crustacea	No	Macadamia (Queensland) nuts	No
Eggs	No	Pecan nuts	No
Fish	No	Pistachio nuts	No
Lupin	No	Walnuts	No
Milk	Yes	Peanuts	No
Molluscs	No	Sesame Seeds	No
		Soybeans	No
		Sulphur Dioxide and Sulphites	No

Additional Allergen Information

For allergens, see ingredients in BOLD.

SUPPLEMENTARY
INGREDIENT
INFORMATION

Palm Oil	Yes
Hydrogenated Vegetable Oil/Fat	No
GM Protein/DNA	No

ADDITIVES

Product Contains:

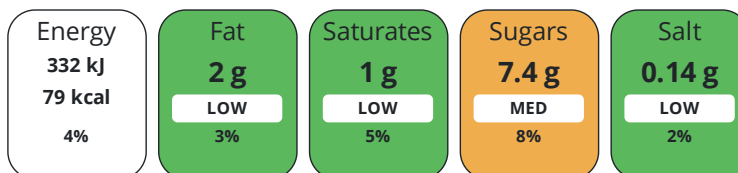
Artificial Antioxidants	No	Artificial Flavourings	No
Artificial Colours	No	Artificial Preservatives	No
Artificial Flavour Enhancers	No	Artificial Sweeteners	No

DIET
SUITABILITY

Suitable for Coeliacs	No	Halal Diet	No
Kosher Diet	No	Vegetarian Diet	Suitable for
Vegan Diet	No		

NUTRITIONAL
INFORMATION

Each 100g/ml portion contains:



of your reference intake.

Typical values per 100g/ml : Energy 79kcal / 332kJ

Nutrient	per 100g/ml	RI per 100g/ml	per 125g/ml serving	RI per 125g/ml serving
Energy (kJ)	332 kJ	4%	415 kJ	5%
Energy (kcal)	79 kcal	4%	98.8 kcal	5%
Fat	2 g	3%	2.5 g	4%
of which Saturates	1 g	5%	1.3 g	7%
Carbohydrate	12.3 g	5%	15.4 g	6%
of which Sugars	7.4 g	8%	9.3 g	10%
Fibre	< 0.5 g		0.6 g	
Protein	2.9 g	6%	3.6 g	7%
Salt	0.14 g	2%	0.2 g	3%
Serving Size	125 g			

SUPPLEMENTARY
NUTRITIONAL
INFORMATION

HFSS (HIGH IN
FAT, SALT AND
SUGAR)
HANDLING &
STORAGE
INFORMATION

HFSS Status	No
--------------------	----

Directions For Use

Taste delicious hot or cold... To heat: 1. Empty contents into a saucepan and heat gently stirring frequently. Do not boil. To microwave (800w, Cat E 4 min): 1. Empty contents into a microwavable container. 2. Cover, heat on full power for 2 mins. 3. Stir, re-cover, heat on full power for a further 2 mins. After heating, handle with care. All microwave ovens vary, amend cooking times as needed.

Storage Instructions

Store in a cool, dry place. Once opened keep refrigerated and consume with 3 days.

Shelf Life from Time of Production	720 Days
---	----------



	Other Accreditation					
	N/A					
ORIGIN	Product Country of Origin/Place of Provenance		United Kingdom			
	Additional Origin Details					
	N/A					
PRODUCT CHARACTERISTICS	Standards Testing					
	Do you undertake trend analysis of microbiological results?	No	Is shelf life testing undertaken?		Yes	
CONFIGURATION	Case Configuration		Inner Pack Configuration			
	Total Quantity of Inner Components in Outer Case	12 Units				
	Is the Outer Case Splittable?	Yes				
PRODUCT WEIGHTS	Inner Component					
	Variable Weight Consumer Item	No				
	Weight/Volume					
	1kg					
	Outer Case					
	Outer Case Gross Weight	12.45 kg				
	Outer Case Net Weight	12 kg				
PRODUCT DIMENSIONS	Inner Component					
	Inner Component Depth	63 mm				
	Inner Component Width	95 mm				
	Inner Component Height	170 mm				
	Outer Case					
	Outer Case Depth	394 mm				
	Outer Case Width	198 mm				
	Outer Case Height	178 mm				
PALLET INFORMATION	Quantity of Cases Per Pallet Layer	5 Cases	Pallet Height		1.05 MTR	
	Quantity of Layers Per Pallet	15 Layers	Pallet Gross Weight		933.75 kg	
	Quantity of Cases Per Pallet	75 Cases				
PACKAGING	Inner Component Packaging					
	Type	Materials	Weight	Recycled Plastic %	Recyclable	Returnable Composite
	Carton	Paper/Cardboard	27.8 g	- %		
	Outer Case Packaging					
	Type	Materials	Weight	Recycled Plastic %	Recyclable	Returnable Composite
	Case	Plastic	20.6 g	- %		
	Case	Paper/Cardboard	95 g	- %		

Transport Packaging

Type	Materials	Weight	Recycled Plastic %	Recyclable	Returnable	Composite
Other	Plastic	150 g	- %		Yes	
Other	Wood	25000 g	- %		Yes	

OTHER INFORMATION

Identification/Health Marks

GB DE002

Manufacturer Comments

Nutrition per 100g as sold

CONTACT INFORMATION

Address

Premier Foods
Premier Foods, Premier House
Centrium Business Park, Griffiths Way
St Albans
AL1 2RE
England

Technical Contact

Nicola Ratcliffe
Business Unit Coordinator
nicola.ratcliffe@premierfoods.co.uk

P: (Phone) 01727 815850

Complaints Contact

Consumer Relations Team
Customer Care
LCescalations@premierfoods.co.uk

The information on the [Erudus System](#) has been supplied by the manufacturers of the products and, whilst the owners of the Erudus System take steps to ensure the information is regularly updated, they give no warranty and no guarantee that the information is accurate. Product information and ingredients may change, please always read product labels carefully in addition to using the information provided by Erudus.

We do not accept liability for any inaccuracies or incorrect information contained on this site.
Please visit <http://www.erudus.com/terms-and-conditions> for full terms and conditions.