

S2554

Angel Delight Butterscotch Flavour Dessert Mix 600g

Butterscotch Flavour Dessert Mix 12x

PRODUCT DESCRIPTION

Butterscotch flavour dessert mix

Brand	Premier Foods
Manufacturer Product Code	1014198
Product Type	Food
Product Category	Desserts
Storage Type	Ambient
Erudus ID	29503b09fe954d1a8f01e6772b16d1b7
Specification Type	Legacy



Inner Component GTIN 5000354916755



INGREDIENTS

Ingredient Declaration

Sugar, Skimmed **MILK** Powder, Modified Starch, Maltodextrin, Palm Oil, Gelling Agents (Diphosphates, Sodium Phosphates), Emulsifiers (Propylene Glycol Esters of Fatty Acids, Lecithins), Colours (Plain Caramel, Beetroot Red), Lactose (**MILK**), **MILK** Proteins, Calcium Carbonate, Whey Powder (**MILK**), Anti-caking Agent (Silicon Dioxide), Flavouring.

ALLERGENS

Product Contains:

Celery/Celery	No	Mustard	No
Cereals Containing Gluten	No	Nuts (Tree)	No
Barley	No	Almond nuts	No
Oats	No	Brazil nuts	No
Rye	No	Cashew nuts	No
Wheat (including Spelt and Khorasan)	No	Hazelnuts	No
Gluten content <20ppm	Yes	Macadamia (Queensland) nuts	No
Crustacea	No	Pecan nuts	No
Eggs	No	Pistachio nuts	No
Fish	No	Walnuts	No
Lupin	No	Peanuts	No
Milk	Yes	Sesame Seeds	No
Molluscs	No	Soybeans	No
		Sulphur Dioxide and Sulphites	No

Additional Allergen Information

For allergens, see ingredients in bold.

SUPPLEMENTARY
INGREDIENT
INFORMATION

Palm Oil	Yes
Hydrogenated Vegetable Oil/Fat	No
GM Protein/DNA	No

ADDITIVES

Product Contains:

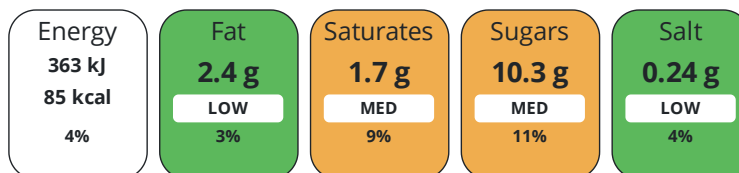
Artificial Antioxidants	No	Artificial Flavourings	No
Artificial Colours	No	Artificial Preservatives	No
Artificial Flavour Enhancers	No	Artificial Sweeteners	No

DIET
SUITABILITY

Suitable for Coeliacs	Yes	Halal Diet	No
Kosher Diet	No	Vegetarian Diet	Suitable for
Vegan Diet	No		

NUTRITIONAL
INFORMATION

Each 100g/ml portion contains:



of your reference intake.

Typical values per 100g/ml : Energy 85kcal / 363kj

Nutrient	per 100g/ml	RI per 100g/ml	per 76g/ml serving	RI per 76g/ml serving
Energy (kJ)	363 kJ	4%	275.9 kJ	3%
Energy (kcal)	85 kcal	4%	64.6 kcal	3%
Fat	2.4 g	3%	1.8 g	3%
of which Saturates	1.7 g	9%	1.3 g	7%
Carbohydrate	13.5 g	5%	10.3 g	4%
of which Sugars	10.3 g	11%	7.8 g	9%
Fibre	< 0.5 g		0.4 g	
Protein	2.9 g	6%	2.2 g	4%
Salt	0.24 g	4%	0.2 g	3%
Serving Size	76 g			

SUPPLEMENTARY
NUTRITIONAL
INFORMATION

HFSS (HIGH IN
FAT, SALT AND
SUGAR)

HFSS Status	Yes
--------------------	-----

HANDLING &
STORAGE
INFORMATION

Directions For Use

Make Up & Serving Instructions Using Milk To Make 10 portions = 150g Dessert Mix with 600ml Milk To Make 20 portions = 300g Dessert Mix with 1,200ml Milk To Make 26 portions = 390g Dessert Mix with 1,550ml Milk To Make 40 portions = 600g Dessert Mix with 2,400ml Milk Using Water To Make 10 portions = 230g Dessert Mix with 650ml Water To Make 20 portions = 460g Dessert Mix with 1,300ml Water To Make 26 portions = 600g Dessert Mix with 1,700ml Water This pack makes 26 x 110ml portions with water or 40 x 110ml portion with semi-skimmed milk. Once made up keep refrigerated and consume within 24 hours. 1. Pour required quantity of water or milk into a large mixing bowl. 2. Add required quantity of dessert mix, whisk for 30 seconds on low speed. 3. Scrape down. Whisk for 4 minutes on high speed. Leave to stand for 5 minutes before serving.

Storage Instructions

Store in a cool dry place. Keep bag tightly closed after part use.

Shelf Life from Time of Production 270 Days

ACCREDITATIONS/
CERTIFICATIONS/
ASSURANCE
SCHEMES



Other Accreditation

N/A

ORIGIN

Product Country of Origin/Place of United Kingdom

Provenance

Additional Origin Details

N/A

PRODUCT
CHARACTERISTICS

Standards Testing

Do you undertake trend analysis of microbiological results? Yes

Is shelf life testing undertaken? Yes

CONFIGURATION

Case Configuration

Inner Pack Configuration

Total Quantity of Inner Components in 12 Units

Outer Case

Is the Outer Case Splittable? Yes

PRODUCT
WEIGHTS

Inner Component

Variable Weight Consumer Item No

Weight/Volume

600g

Outer Case

Outer Case Gross Weight 8.15 kg

Outer Case Net Weight 7.2 kg

PRODUCT
DIMENSIONS

Inner Component

Inner Component Depth 59 mm

Inner Component Width 142 mm

Inner Component Height 187 mm

Outer Case

Outer Case Depth 390 mm

Outer Case Width 295 mm

Outer Case Height 205 mm

PALLET
INFORMATION

Quantity of Cases Per Pallet Layer 10 Cases

Pallet Height 1.23 MTR

Quantity of Layers Per Pallet 6 Layers

Pallet Gross Weight 519.18 kg

Quantity of Cases Per Pallet 60 Cases

PACKAGING

Inner Component Packaging

Type	Materials	Weight	Recycled Plastic %	Recyclable	Returnable	Composite
Carton	Paper/Cardboard	33 g	- %			
Carton	Other	8 g	- %			

Outer Case Packaging

Type	Materials	Weight	Recycled Plastic %	Recyclable	Returnable	Composite
Case	Paper/Cardboard	400 g	- %			

Transport Packaging

Type	Materials	Weight	Recycled Plastic %	Recyclable	Returnable	Composite
Other	Plastic	150 g	- %		Yes	
Other	Wood	25000 g	- %		Yes	

OTHER INFORMATION

Manufacturer Comments

Per 100g as prepared with semi-slimmed milk GTIN outer case barcode not given as this recipe has been replaced with 1018462. Once this product 1014198 has sold through it will be removed from ERUDUS leaving the new recipe 1018462 only.

CONTACT INFORMATION

Address

Premier Foods
Premier Foods, Premier House
Centrium Business Park, Griffiths Way
St Albans
AL1 2RE
England

Technical Contact

Nicola Ratcliffe
Business Unit Coordinator
nicola.ratcliffe@premierfoods.co.uk

P. (Phone) 01727 815850

Complaints Contact

Consumer Relations Team
Customer Care
LCescalations@premierfoods.co.uk

The information on the [Erudus System](#) has been supplied by the manufacturers of the products and, whilst the owners of the Erudus System take steps to ensure the information is regularly updated, they give no warranty and no guarantee that the information is accurate. Product information and ingredients may change, please always read product labels carefully in addition to using the information provided by Erudus.

We do not accept liability for any inaccuracies or incorrect information contained on this site.
Please visit <http://www.erudus.com/terms-and-conditions> for full terms and conditions.