

Changed Feb 12, 2024 13:41

Reviewed Feb 12, 2024 13:41

Erudus ID 3883d5ba514f41eb9a39dc8d1a3f53ec

Version 2.0

S2567

# Ambrosia Rice Pudding pot 120g

Rice Pudding 6x120g

## PRODUCT DESCRIPTION

Rice Pudding

|                           |                                  |
|---------------------------|----------------------------------|
| Brand                     | Ambrosia                         |
| Manufacturer Product Code | 1005023                          |
| Product Type              | Food                             |
| Product Category          | Desserts                         |
| Storage Type              | Ambient                          |
| Erudus ID                 | 3883d5ba514f41eb9a39dc8d1a3f53ec |
| Specification Type        | Generic                          |
| Inner Component GTIN      | 50126866                         |
| Outer Case GTIN           | 05000117802059                   |



## INGREDIENTS

### Ingredient Declaration

Full Cream **Milk**, Skimmed **Milk**, Whey (**Milk**), Rice (9%), Sugar.

Total Milk Content 72%.

## ALLERGENS

Product Contains:

|   |     |                                      |    |
|---|-----|--------------------------------------|----|
| <b>Celery/Celeriac</b>                      | No  | <b>Mustard</b>                       | No |
| <b>Cereals Containing Gluten</b>            | No  | <b>Nuts (Tree)</b>                   | No |
| <b>Barley</b>                               | No  | <b>Almond nuts</b>                   | No |
| <b>Oats</b>                                 | No  | <b>Brazil nuts</b>                   | No |
| <b>Rye</b>                                  | No  | <b>Cashew nuts</b>                   | No |
| <b>Wheat (including Spelt and Khorasan)</b> | No  | <b>Hazelnuts</b>                     | No |
| <b>Crustacea</b>                            | No  | <b>Macadamia (Queensland) nuts</b>   | No |
| <b>Eggs</b>                                 | No  | <b>Pecan nuts</b>                    | No |
| <b>Fish</b>                                 | No  | <b>Pistachio nuts</b>                | No |
| <b>Lupin</b>                                | No  | <b>Walnuts</b>                       | No |
| <b>Milk</b>                                 | Yes | <b>Peanuts</b>                       | No |
| <b>Molluscs</b>                             | No  | <b>Sesame Seeds</b>                  | No |
|   |     | <b>Soybeans</b>                      | No |
|   |     | <b>Sulphur Dioxide and Sulphites</b> | No |

### Allergen Statement On Pack

For allergens, see ingredients in bold.

## SUPPLEMENTARY INGREDIENT INFORMATION

|                                       |    |
|---------------------------------------|----|
| <b>Palm Oil</b>                       | No |
| <b>Hydrogenated Vegetable Oil/Fat</b> | No |
| <b>GM Protein/DNA</b>                 | No |

ADDITIVES

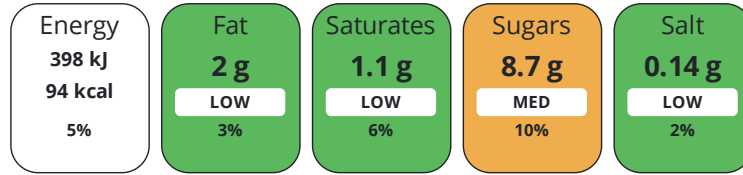
Product Contains:

|                                     |    |                                 |              |
|-------------------------------------|----|---------------------------------|--------------|
| <b>Artificial Antioxidants</b>      | No | <b>Artificial Flavourings</b>   | No           |
| <b>Artificial Colours</b>           | No | <b>Artificial Preservatives</b> | No           |
| <b>Artificial Flavour Enhancers</b> | No | <b>Artificial Sweeteners</b>    | No           |
| <b>Vegan Diet</b>                   | No | <b>Vegetarian Diet</b>          | Suitable for |
| <b>Halal Diet</b>                   | No | <b>Kosher Diet</b>              | No           |

DIET SUITABILITY

NUTRITIONAL INFORMATION

Each 100g/ml portion contains:



of your reference intake.

Typical values per 100g/ml : Energy 94kcal / 398kJ

| Nutrient                  | per 100g | RI per 100g | per 120g serving | RI per 120g serving |
|---------------------------|----------|-------------|------------------|---------------------|
| <b>Energy (kJ)</b>        | 398 kJ   | 5%          | 477.6 kJ         | 6%                  |
| <b>Energy (kcal)</b>      | 94 kcal  | 5%          | 112.8 kcal       | 6%                  |
| <b>Fat</b>                | 2 g      | 3%          | 2.4 g            | 3%                  |
| <b>of which Saturates</b> | 1.1 g    | 6%          | 1.3 g            | 7%                  |
| <b>Carbohydrate</b>       | 15.9 g   | 6%          | 19.1 g           | 7%                  |
| <b>of which Sugars</b>    | 8.7 g    | 10%         | 10.4 g           | 12%                 |
| <b>Fibre</b>              | < 0.5 g  |             | 0.6 g            |                     |
| <b>Protein</b>            | 3.1 g    | 6%          | 3.7 g            | 7%                  |
| <b>Salt</b>               | 0.14 g   | 2%          | 0.2 g            | 3%                  |
| <b>Serving Size</b>       | 120 g    |             |                  |                     |

SUPPLEMENTARY NUTRITIONAL INFORMATION

HFSS (HIGH IN FAT, SALT AND SUGAR)

|                    |    |
|--------------------|----|
| <b>HFSS Status</b> | No |
|--------------------|----|

HANDLING & STORAGE INFORMATION

**Directions For Use**

Tastes delicious hot or cold... If microwaving carefully remove the entire foil lid. Heat on full power for 30 seconds. Leave to stand for 1 minute and stir before eating. (800 watt/Cat E microwave).

**Storage Instructions**

Store in a cool, dry place

|   |          |   |    |
|---|----------|---|----|
| <b>Shelf Life from Time of Production</b> | 270 Days | <b>Exempt From Shelf Life Labelling</b> | No |
|---|----------|---|----|

ACCREDITATIONS/ CERTIFICATIONS/ ASSURANCE SCHEMES



ORIGIN

|  |                |
|--|----------------|
| <b>Product Country of Origin/Place of Provenance</b> | United Kingdom |
|--|----------------|

PRODUCT CHARACTERISTICS

Standards Testing

|                    |  |                  |  |                           |                   |                   |                  |
|--------------------|--|------------------|--|---------------------------|-------------------|-------------------|------------------|
|                    | <b>Do you undertake trend analysis of microbiological results?</b> | No               | <b>Is shelf life testing undertaken?</b> |                           | Yes               |                   |                  |
| CONFIGURATION      | Case Configuration   |                  | Inner Pack Configuration                 |                           |                   |                   |                  |
|                    | <b>Total Quantity of Inner Components in Outer Case</b>            | 6 Units          |  |                           |                   |                   |                  |
|                    | <b>Is the Outer Case Splittable?</b>                               | Yes              |  |                           |                   |                   |                  |
| PRODUCT WEIGHTS    | Inner Component  |                  |  |                           |                   |                   |                  |
|                    | <b>Variable Weight Consumer Item</b>                               | No               |  |                           |                   |                   |                  |
|                    | <b>Inner Component Weight</b>                                      | 120 g            |  |                           |                   |                   |                  |
|                    | <b>e mark</b>  | Yes              |  |                           |                   |                   |                  |
|                    | Outer Case   |                  |  |                           |                   |                   |                  |
|                    | <b>Outer Case Gross Weight</b>                                     | 0.76 kg          |  |                           |                   |                   |                  |
|                    | <b>Outer Case Net Weight</b>                                       | 0.72 kg          |  |                           |                   |                   |                  |
| PRODUCT DIMENSIONS | Inner Component  |                  |  |                           |                   |                   |                  |
|                    | <b>Inner Component Depth</b>                                       | 71 mm            |  |                           |                   |                   |                  |
|                    | <b>Inner Component Width</b>                                       | 71 mm            |  |                           |                   |                   |                  |
|                    | <b>Inner Component Height</b>                                      | 57 mm            |  |                           |                   |                   |                  |
|                    | Outer Case   |                  |  |                           |                   |                   |                  |
|                    | <b>Outer Case Depth</b>  | 220 mm           |  |                           |                   |                   |                  |
|                    | <b>Outer Case Width</b>  | 145 mm           |  |                           |                   |                   |                  |
|                    | <b>Outer Case Height</b>   | 59 mm            |  |                           |                   |                   |                  |
| PALLET INFORMATION | <b>Quantity of Cases Per Pallet Layer</b>                          | 37 Cases         | <b>Pallet Height</b>                     |                           | 1 MTR             |                   |                  |
|                    | <b>Quantity of Layers Per Pallet</b>                               | 15 Layers        | <b>Pallet Gross Weight</b>               |                           | 446 kg            |                   |                  |
|                    | <b>Quantity of Cases Per Pallet</b>                                | 555 Cases        |  |                           |                   |                   |                  |
| PACKAGING          | Inner Component Packaging  |                  |  |                           |                   |                   |                  |
|                    | <b>Type</b>  | <b>Materials</b> | <b>Weight</b>                            | <b>Recycled Plastic %</b> | <b>Recyclable</b> | <b>Returnable</b> | <b>Composite</b> |
|                    | Pot  | Plastic          | 4.7 g                                    | - %                       |                   |                   |                  |
|                    | Pot  | Aluminium        | 0.48 g                                   | - %                       |                   |                   |                  |
|                    | Outer Case Packaging   |                  |  |                           |                   |                   |                  |
|                    | <b>Type</b>  | <b>Materials</b> | <b>Weight</b>                            | <b>Recycled Plastic %</b> | <b>Recyclable</b> | <b>Returnable</b> | <b>Composite</b> |
|                    | Case   | Plastic          | 6 g                                      | - %                       |                   |                   |                  |
|                    | Case   | Paper/Cardboard  | 19.2 g                                   | - %                       |                   |                   |                  |
|                    | Transport Packaging  |                  |  |                           |                   |                   |                  |
|                    | <b>Type</b>  | <b>Materials</b> | <b>Weight</b>                            | <b>Recycled Plastic %</b> | <b>Recyclable</b> | <b>Returnable</b> | <b>Composite</b> |
|                    | Pallet Wrap  | Plastic          | 150 g                                    | - %                       |                   | Yes               |                  |
|                    | Pallet   | Wood             | 30000 g                                  | - %                       |                   | Yes               |                  |
| OTHER INFORMATION  |  |                  | <b>Identification/Health Marks</b>       |                           | GB DE002          |                   |                  |
|                    | <b>Manufacturer Comments</b>                                       |                  |  |                           |                   |                   |                  |
|                    | N/A  |                  |  |                           |                   |                   |                  |

CONTACT  
INFORMATION

Address

Premier Foods  
Premier Foods, Premier House  
Centrium Business Park, Griffiths Way  
St Albans  
AL1 2RE  
England

P. (Phone) 01727 815850

Complaints Contact

Consumer Relations Team  
Customer Care  
LCescalations@premierfoods.co.uk

Technical Contact

Nicola Ratcliffe  
Business Unit Coordinator  
nicola.ratcliffe@premierfoods.co.uk

The information on the [Erudus System](#) has been supplied by the manufacturers of the products and, whilst the owners of the Erudus System take steps to ensure the information is regularly updated, they give no warranty and no guarantee that the information is accurate. Product information and ingredients may change, please always read product labels carefully in addition to using the information provided by Erudus.

We do not accept liability for any inaccuracies or incorrect information contained on this site.  
Please visit <http://www.erudus.com/terms-and-conditions> for full terms and conditions.